

REFERENCES CITED

Abreu & Robeson

1950a *Hillcrest Homes*. Blueprints located at the Housing Authority of the City of East Point, GA.

1950b *Washington Carver Homes*. Blueprints located at the Housing Authority of the City of East Point, GA.

American Institute of Architects

2009 Archival files on member architects. Washington, D.C.

Atlanta Constitution

1952 "Demand Quick Slum Action in East Point." 18 Mar. On file, East Point Historical Society, East Point, Georgia.

Atlanta Regional Commission

1980 *Survey of Federally Assisted Housing Programs in the Atlanta Region*. ARC Staff Working Paper. ARC, Atlanta.

Atlanta Suburban Reporter

1950a "Building Inspector Declares War on East Point Slums." 24 August. On file, East Point Historical Society, East Point, Georgia.

1950b "Invitations for East Point Housing Project Bids to be Let Next Week." 9 Nov. On file, East Point Historical Society, East Point, Georgia.

City of Atlanta

1967 *A Review of Atlanta's Housing Program: Its Problems and Prospects*. City of Atlanta, Planning Department and Housing Resources Committee.

Clemons, Ida

2009 Interview by Jeffrey Holland, March 26, 2009 at Hillcrest Homes, East Point, Georgia. Recording on file, TRC, Norcross, Georgia.

Davis, Joe

1951 "\$63,000,000 Earmarked for Housing in Georgia." *The Atlanta Constitution* 21 June, A:16.

East Point Chamber of Commerce

ca. 1965 "Seven Reasons Why East Point is Georgia's 7th Largest City." East Point vertical file, Atlanta History Center, Atlanta, Georgia.

East Point City Council Minutes

1949–1959 On file, East Point Historical Society, East Point, Georgia.

- Federal Emergency Administration of Public Works (PWA)
1936 *PWA Land Purchase Record*. National Archives and Records Administration, Record Group 196.
- Fisher, Robert Moore
1975 *20 Years of Public Housing: Economic Aspects of the Federal Program*. Reprinted. Greenwood Press, Westport, Connecticut. Originally published in 1959.
- Freeman, Leonard
1969 *Public Housing: The Politics of Poverty*. Holt, Rinehart and Winston, New York.
- Gane, John
1970 *American Architects Dictionary*. R.R. Bowker, New York.
- Holliman, Irene V.
2008 Techwood Homes. New Georgia Encyclopedia [online document].
www.georgiaencyclopedia.com. Accessed 20 March, 2009.
- Macey, John
1972 Publicly Provided and Assisted Housing in the USA: Report on HUD's Housing Management Policies and Programs. The Urban Institute, Washington, D.C.
- Mason, Herman
2001 *East Point, Georgia*. Arcadia Publishing, Charleston.
- National Park Service
1991 *Bulletin 15: How to Apply the National Register Criteria for Evaluation*. National Register Branch, Interagency Resources Division, National Park Service. U.S. Department of the Interior, Washington, D.C.
- Pittcoff, Winton
1999 New Hope for Public Housing? National Housing Institute, Shelterforce Online: 104 (March/April). <http://www.nhi.org/online/issues/104/pitcoff.html>. Accessed 24 March 2009.
- PWA – see Federal Emergency Administration of Public Works
- Robinson & Associates, Inc and Jeffrey Shrimpton
1997 *Historic Context: Public Housing in the United States, 1933-1949*. U.S Department of Housing and Urban Development.
- Rosenman, Samuel I. ed.
1941 *The Public Papers and Addresses of Franklin Delano Roosevelt*. Macmillan Press, New York.
- Thomas, Sandra
2008 Interview by Jeffrey Holland, March 26, 2009 at Hillcrest Homes, East Point, Georgia. Recording on file, TRC, Norcross, Georgia.

U. S. Department of Agriculture

1940 Aerial Photographs. Agricultural Stabilization and Conservation Service. Located at the University of Georgia Map Library Athens, GA.

1950 Aerial Photographs. U.S. Soil Survey. Located online at the Fulton County GIS Website: <http://wms.co.fulton.ga.us/>. Accessed 16 April 2009.

1955 Aerial Photographs. Agricultural Stabilization and Conservation Service. Located at the University of Georgia Map Library Athens, GA.

1960 Aerial Photographs. Agricultural Stabilization and Conservation Service. Located at the University of Georgia Map Library Athens, GA.

U.S. Department of Housing and Urban Development

n.d. About Hope VI. U.S. Department of Housing and Urban Development. Online document, <http://www.hud.gov/offices/pih/programs/ph/hope6/about/>. Accessed 14 May 2009.

APPENDIX A:
HILLCREST HOMES PHOTOGRAPHIC DOCUMENTATION

**PUBLIC HOUSING IN EAST POINT, FULTON COUNTY,
GEORGIA:**

PHOTOGRAPHIC DOCUMENTATION

HILLCREST HOMES

Submitted to:

HOUSING AUTHORITY OF EAST POINT
3056 Norman Berry Drive
East Point, GA 30344

Submitted by:

TRC
4155 Shackleford Road Suite 225
Norcross, GA 30093

HP-070312-007

June 2009

TABLE OF CONTENTS

Project Purpose and Photographic Numbering System	1
Setting	1
Architectural Description.....	1
Statement of Significance	2
Geographic Location.....	3
UTM Coordinates	3
Hillcrest Homes Location Map.....	4
Photo Log.....	5
Photo Location Maps	7
Overall Site Plan	7
Building Type A	8
Building Type B.....	9
Building Type C.....	10
Building Type D	11
Community Center.....	12

Contact Sheets

Negatives--located at Georgia Department of Natural Resources, Historic Preservation Division

Project Purpose and Photographic Numbering System:

Between March and April, 2009, TRC conducted historical research and recordation of the Hillcrest Homes in the City of East Point, Georgia. Pursuant to 36 CFR Part 800, regulations implementing Section 106 of the National Historic Preservation Act of 1966, this project was carried out under the Memorandum of Agreement (MOA) between the U.S. Department of Housing and Urban Development, through the Housing Authority of East Point and the Georgia Department of Natural Resources, Historic Preservation Division. The goal of the project was to provide a comprehensive history of public housing in the City of East Point and to provide a permanent archival record of the development prior to the disposition of the property. The permanent archival record is comprised of medium format photography and copies of the original site plans and floor plans.

The photographs are numbered with the abbreviation of Hillcrest Homes (HH) and then a number corresponding to the order of the photographic views. As three exposures for each view were taken on each roll, the leader frame is labeled with the roll number and each view is either frames 2–4, 5–7, or 8–10; one unique number is used for the three views. For example, the photograph numbered HH-4 corresponds to Roll 2, Frames 2 through 4.

Setting:

Hillcrest Homes was developed on occupied land just west of the Hillcrest Cemetery and south of Langford Parkway. The complex is bounded on the east by Stanton Road and is fenced with wrought iron and brick posts on the north, south, and west. Stanton Circle forms a horseshoe through the site and an unnamed one-way street connects Stanton Road to Stanton Circle in the middle of the site. The central orientation of the Hillcrest Homes is a feature characteristic of early housing projects. The complex attempted to foster a strong sense of community in a layout that appeared residential and resembled single-family dwellings. Individual building blocks, containing individual housing units, are detached and oriented in identical setbacks to the street. At the center of the complex is a play area, which includes two playgrounds. Also in the center is a community building that faces to the northeast. The southwest corner of the complex features a wooded lot, part of which has been cleared for a basketball court.

Architectural Description:

The Hillcrest Homes has 20 residential housing blocks and a community center. The housing units are categorized along four different building types, distinguishable by the number of bedrooms ranging from one to four. Rectangular in shape, the units are constructed of concrete block with a common bond brick veneer on the exterior. The building blocks are covered by hipped or side-gable roofs clad with replacement asphalt shingles. The residential building blocks have spacious front porches characterized by projecting, half-hipped roofs supported by metal posts with an inset diamond pattern. The units feature one-over-one double-hung wood sash windows on pre-cast concrete sills in

Hillcrest Homes (HP-070312-007)
City of East Point, Fulton County, Georgia
TRC-March-May 2009

three types: single, paired, and tripled. The floor plan is similar to the ranch style characterized by entry into a living room that opens into a kitchen.

Originally built as the maintenance and management building, the community center at Hillcrest Homes is a square building of concrete block construction with common bond-brick veneer. The hipped roof is clad with asphalt shingles and features wide overhanging eaves. The single and paired one-over-one, double-hung wood sash windows have been replaced with aluminum sash windows. The central entrance is set within a one-bay projecting half-hipped 12' × 6' porch supported by thin metal columns. A secondary entrance is located on the side, southeast elevation. The replacement single-leaf door, which replaced a roll-up door, is set within a recessed brick surround.

Statement of Significance:

The Hillcrest Homes has been determined eligible for listing in the National Register of Historic Places under Criterion A for the role it played locally in meeting a national housing crisis as part of the federal housing programs. It is also eligible under Criterion C for architecture as a well-intact example of public housing constructed during the early period of public housing (ca. 1930–1950), which emphasized strong, planned communities.

Hillcrest Homes (HP-070312-007)
City of East Point, Fulton County, Georgia
TRC-March-May 2009

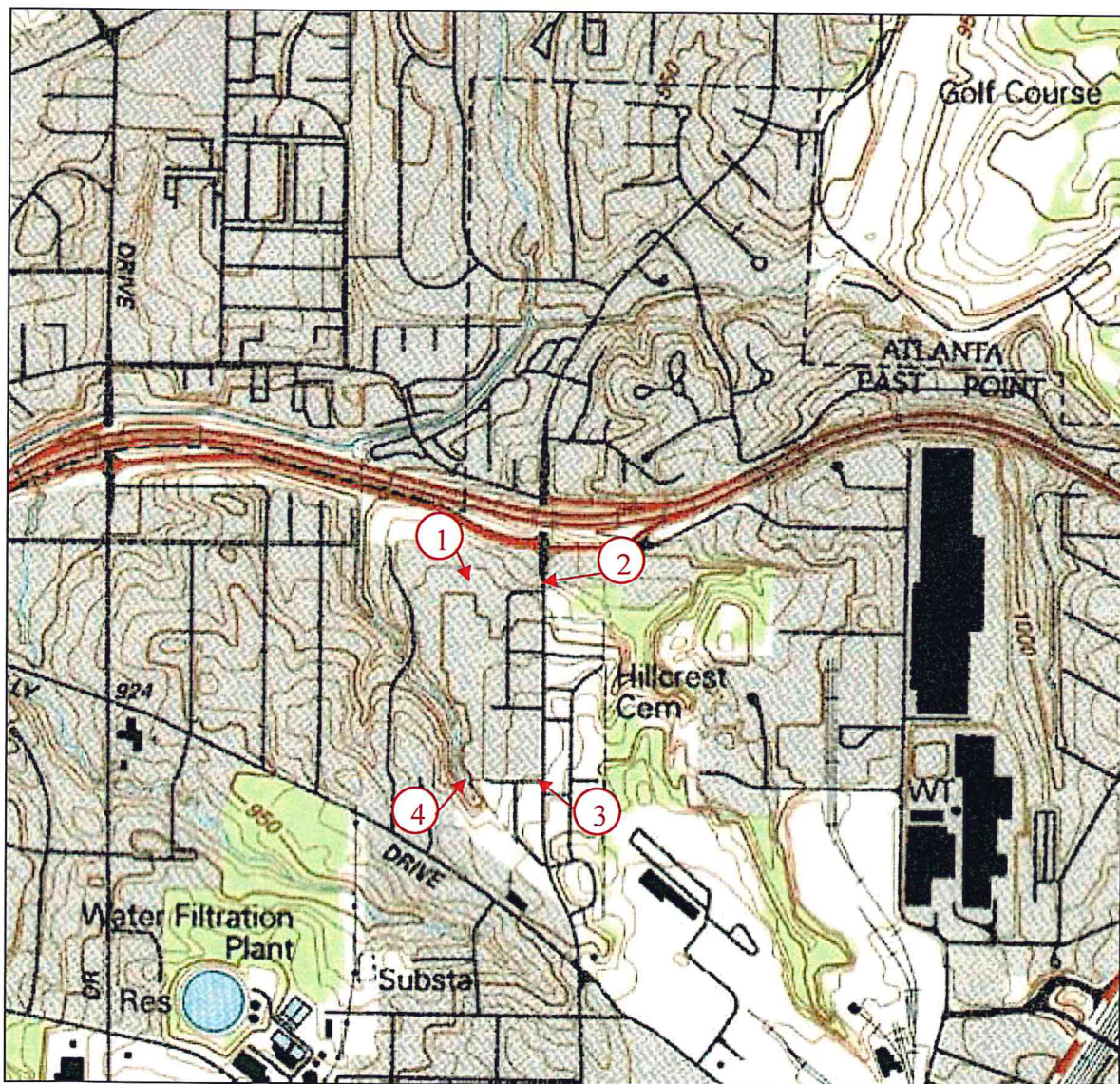
Geographic Location:

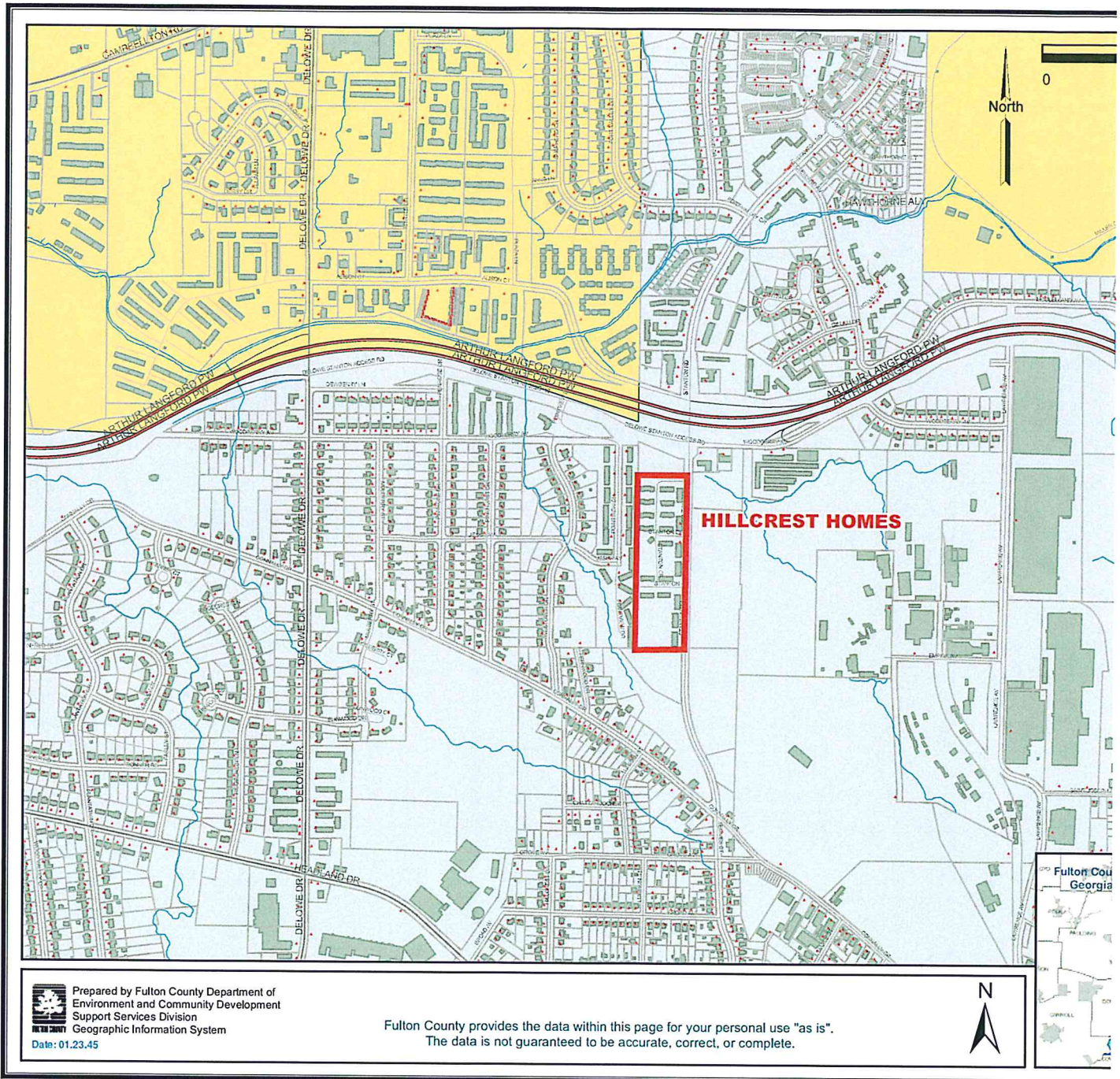
2239 Stanton Road
City of East Point
Fulton County, GA

UTM Coordinates: (NAD 27)

UTM 16

1. Easting: 0736352	Northing: 3731264
2. Easting: 0736482	Northing :3731264
3. Easting: 0736495	Northing 3730899
4. Easting: 0736366	Northing: 3730896





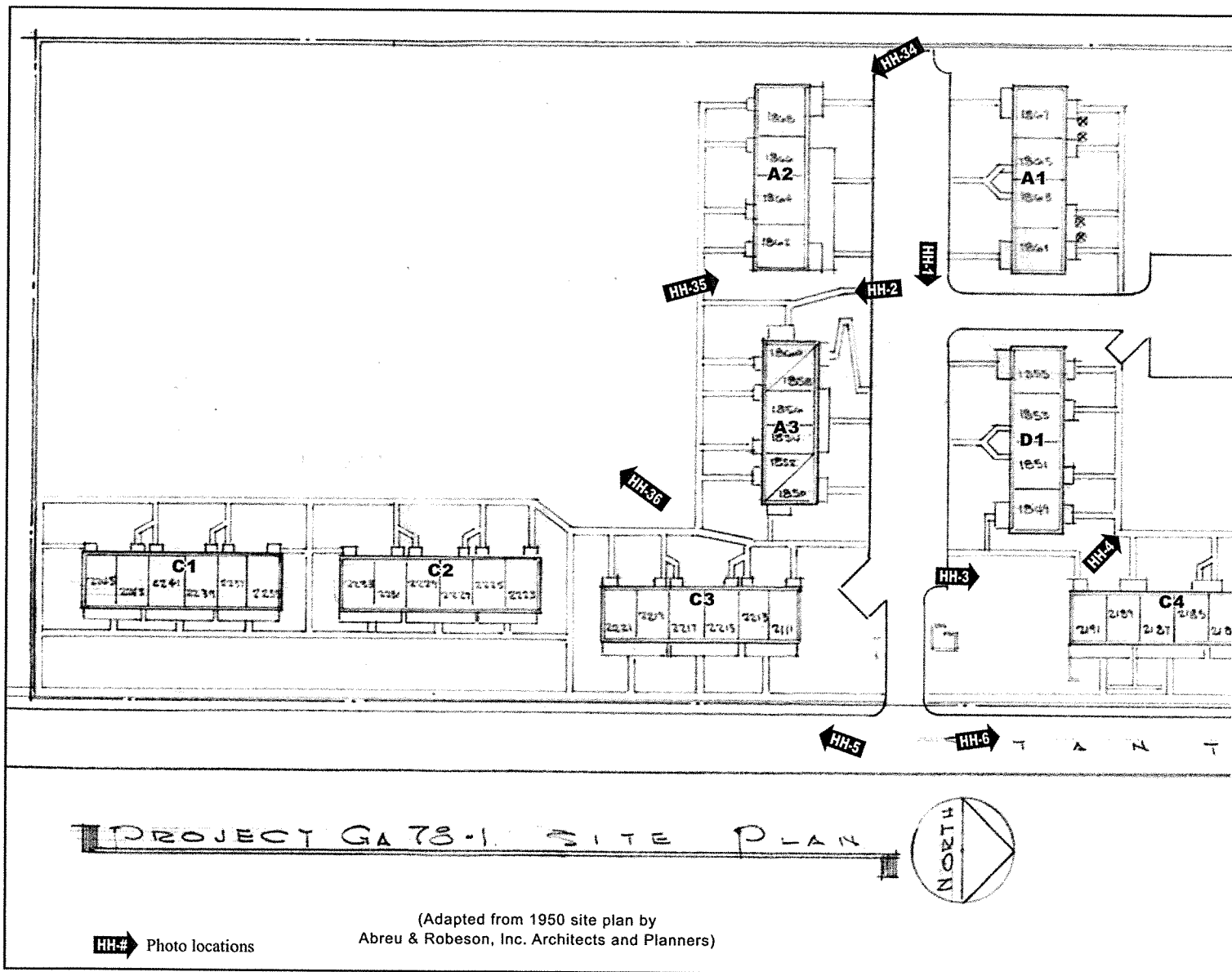
Hillcrest Homes
City of East Point, Fulton County, Georgia

ent of Natural Resources, Historic Preservation Division

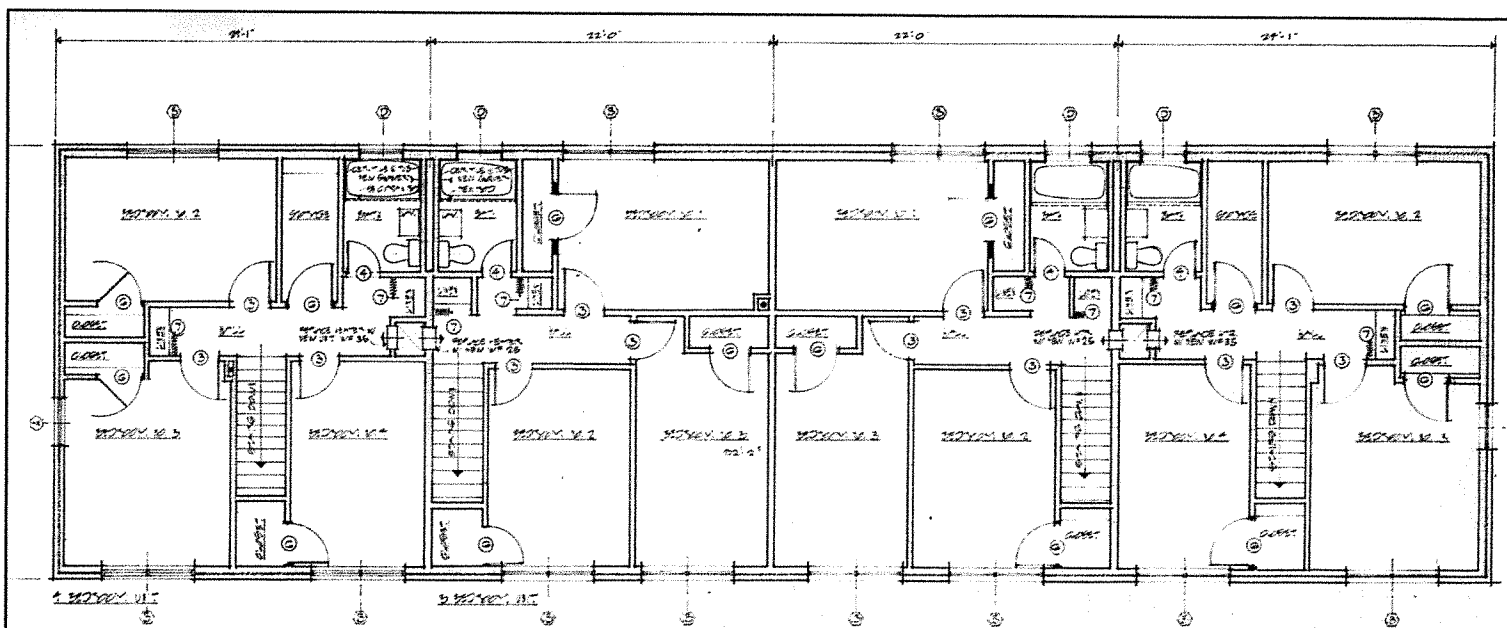
ADDRESS	DIRECTION	ROLL #	FRAME #	DATE OF PHOTOGRAPH
UNITS 1849-1860, 2239 STANTON ROAD	FACING EAST TO HILLCREST CEMETERY	1	2-4	APRIL 14, 2009
SOUTH SIDE OF STANTON COURT, 2239 STANTON ROAD	FACING NORTH	1	5-7	APRIL 14, 2009
2239 STANTON ROAD	FACING NORTH	1	8-10	APRIL 14, 2009
2171 STANTON ROAD	FACING NORTH	2	2-4	APRIL 14, 2009
2239 STANTON ROAD	FACING SOUTHWEST	2	5-7	APRIL 14, 2009
2239 STANTON ROAD	FACING NORTHWEST	2	8-10	APRIL 14, 2009
2239 STANTON ROAD	FACING WEST	3	2-4	APRIL 14, 2009
2239 STANTON ROAD	FACING NORTH	3	5-7	APRIL 14, 2009
2239 STANTON ROAD	FACING EAST	3	8-10	APRIL 14, 2009
2239 STANTON ROAD	FACING WEST	4	2-4	APRIL 14, 2009
UNITS 2132, 2143, 2126, AND 2138, 2239 STANTON ROAD	FACING SOUTHEAST	4	5-7	APRIL 14, 2009
UNITS 2132, 2143, 2126, AND 2138, 2239 STANTON ROAD	FACING NORTHWEST	4	8-10	APRIL 14, 2009
UNITS 2154, 2156, 2158, 2160, 2162, AND 2164, 2239 STANTON ROAD	FACING SOUTHEAST	5	1-3	APRIL 14, 2009
UNITS 2154, 2156, 2158, 2160, 2162, AND 2164, 2239 STANTON ROAD	FACING NORTHWEST	5	5-7	APRIL 14, 2009
UNITS 2151, 2153, 2155, AND 2157, 2239 STANTON ROAD	FACING NORTHEAST	5	8-10	APRIL 14, 2009
UNITS 2151, 2153, 2155, AND 2157, 2239 STANTON ROAD	FACING SOUTHWEST	6	2-4	APRIL 14, 2009
UNITS 2155-2165, 2239 STANTON ROAD	FACING NORTHEAST	6	5-7	APRIL 14, 2009
UNITS 2155-2165, 2239 STANTON ROAD	FACING SOUTHWEST	6	8-10	APRIL 14, 2009
UNITS 2169-2179, 2239 STANTON ROAD	FACING SOUTHWEST	7	2-4	APRIL 14, 2009
UNITS 2169-2179, 2239 STANTON ROAD	FACING NORTHEAST	7	5-7	APRIL 14, 2009
2171 STANTON ROAD	FACING NORTHEAST	7	8-10	APRIL 14, 2009
2171 STANTON ROAD	FACING SOUTHWEST	8	2-4	APRIL 14, 2009
UNIT 2157, 2239 STANTON ROAD	FACING NORTHWEST	8	5-7	APRIL 14, 2009
UNIT 2157, 2239 STANTON ROAD	FACING NORTH	8	8-10	APRIL 14, 2009

Department of Natural Resources, Historic Preservation Division

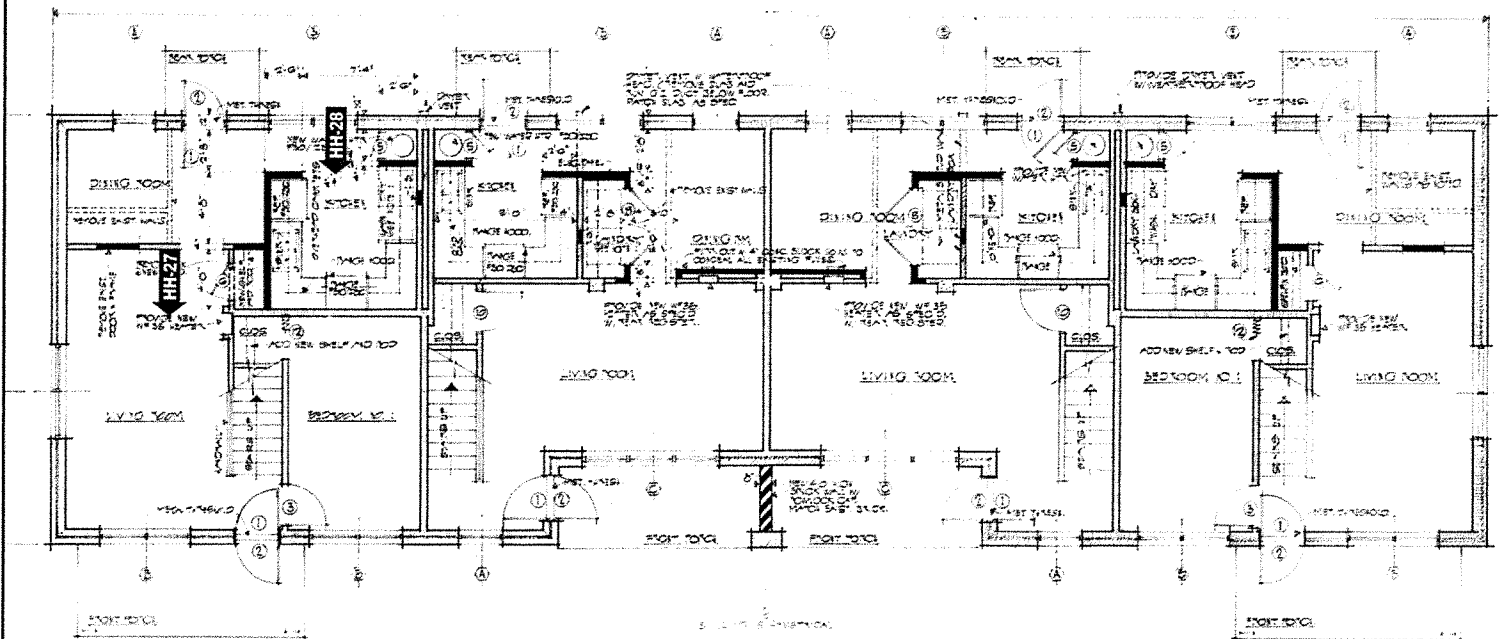
UNIT 2157, 2239 STANTON ROAD	FACING NORTHEAST	9	2-4	APRIL 14, 2009
UNIT 2157, 2239 STANTON ROAD	FACING SOUTH	9	5-7	APRIL 14, 2009
UNIT 2132, 2239 STANTON ROAD	FACING NORTH	9	8-10	APRIL 14, 2009
UNIT 2132, 2239 STANTON ROAD	FACING NORTH	10	2-4	APRIL 14, 2009
UNIT 2141, 2239 STANTON ROAD	FACING SOUTHEAST	10	5-7	APRIL 14, 2009
UNIT 2141, 2239 STANTON ROAD	FACING NORTHWEST	10	8-10	APRIL 14, 2009
UNIT 2141, 2239 STANTON ROAD	FACING SOUTHWEST	11	2-4	APRIL 14, 2009
UNIT 2164, 2239 STANTON ROAD	FACING SOUTHWEST	11	5-7	APRIL 14, 2009
UNIT 2164, 2239 STANTON ROAD	FACING SOUTHWEST	11	8-10	APRIL 14, 2009
UNITS 1862, 1864, 1866 AND 1868, 2239 STANTON ROAD	FACING SOUTHEAST	12	2-4	APRIL 14, 2009
UNITS 1862, 1864, 1866 AND 1868, 2239 STANTON ROAD	FACING NORTHWEST	12	5-7	APRIL 14, 2009
2223-2245, 2239 STANTON ROAD	FACING SOUTH	12	8-10	APRIL 14, 2009
2171, 2239 STANTON ROAD	FACING SOUTHEAST	13	2-4	APRIL 15, 2009
2171, 2239 STANTON ROAD	FACING NORTHEAST	13	5-7	APRIL 15, 2009
2171, 2239 STANTON ROAD	FACING NORTH	13	8-10	APRIL 15, 2009
UNIT 2175, 2239 STANTON ROAD	FACING SOUTH	14	2-4	APRIL 20, 2009
UNIT 2175, 2239 STANTON ROAD	FACING SOUTH	14	5-7	APRIL 20, 2009
UNIT 2179, 2239 STANTON ROAD	FACING WEST	14	8-10	APRIL 20, 2009
UNITS 2142 AND 2144, 2239 STANTON ROAD	FACING NORTHWEST	15	2-4	APRIL 20, 2009
UNIT 2144, 2239 STANTON ROAD	FACING SOUTHWEST	15	5-7	APRIL 20, 2009
UNITS 2155-2165, 2239 STANTON ROAD	FACING SOUTH	15	8-10	APRIL 20, 2009



Hillcrest Homes: Photo Locations
 City of East Point, Fulton County, Georgia
 Photographer: TRC (Vince Macek)
 April 2009

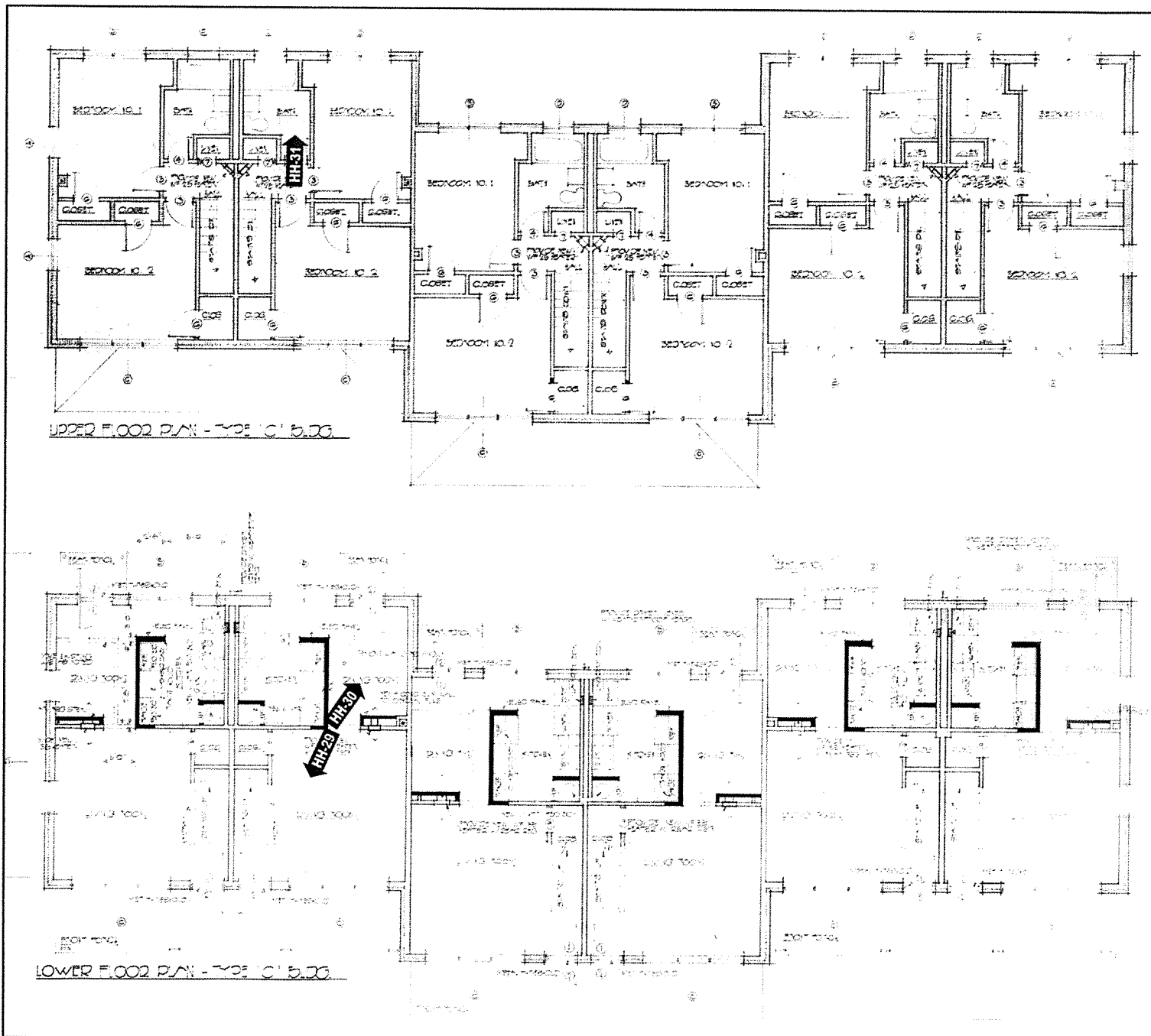


UPPER FLOOR PLAN - TYPE 'A' BLDG.

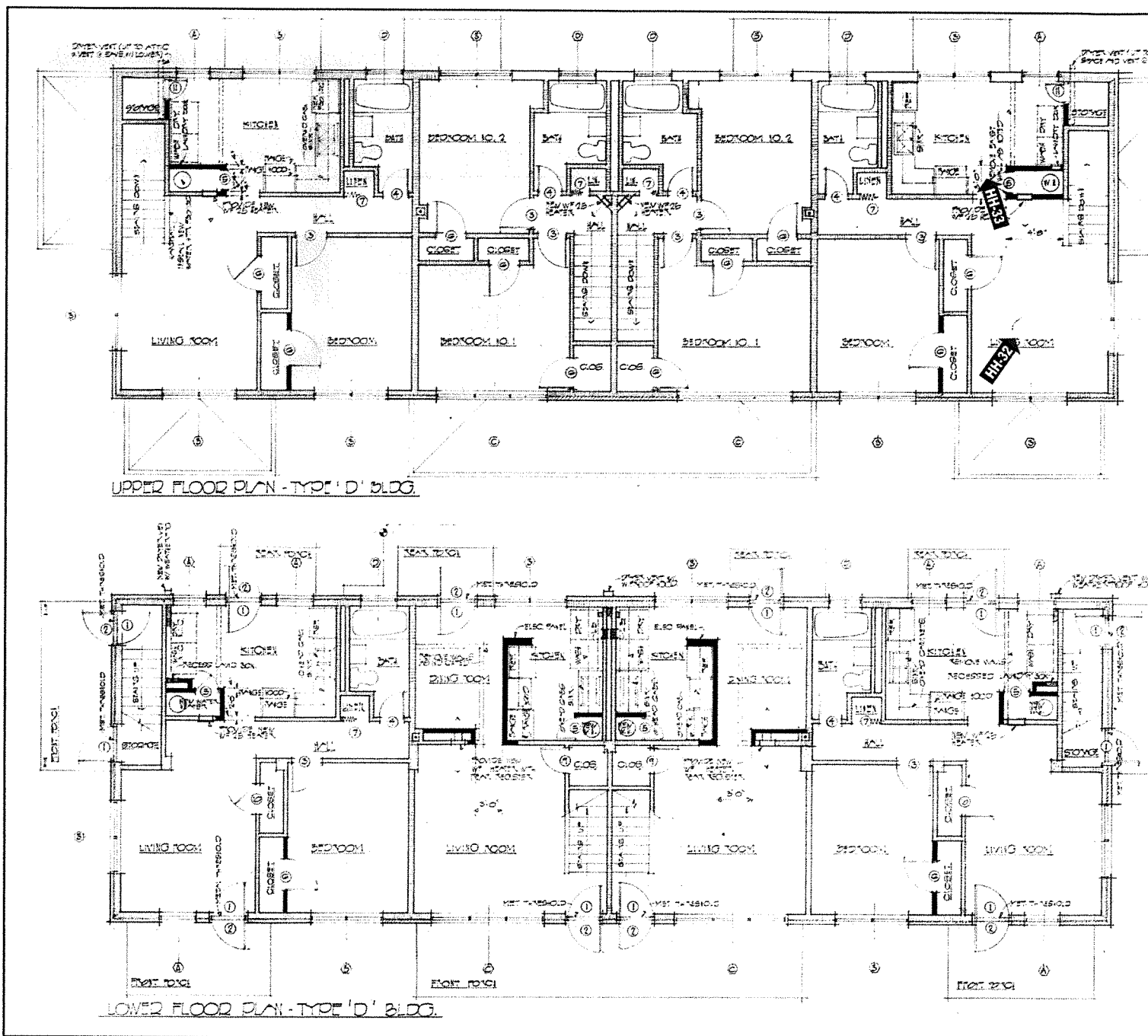


LOWER FLOOR PLAN - TYPE 'A' BLDG.

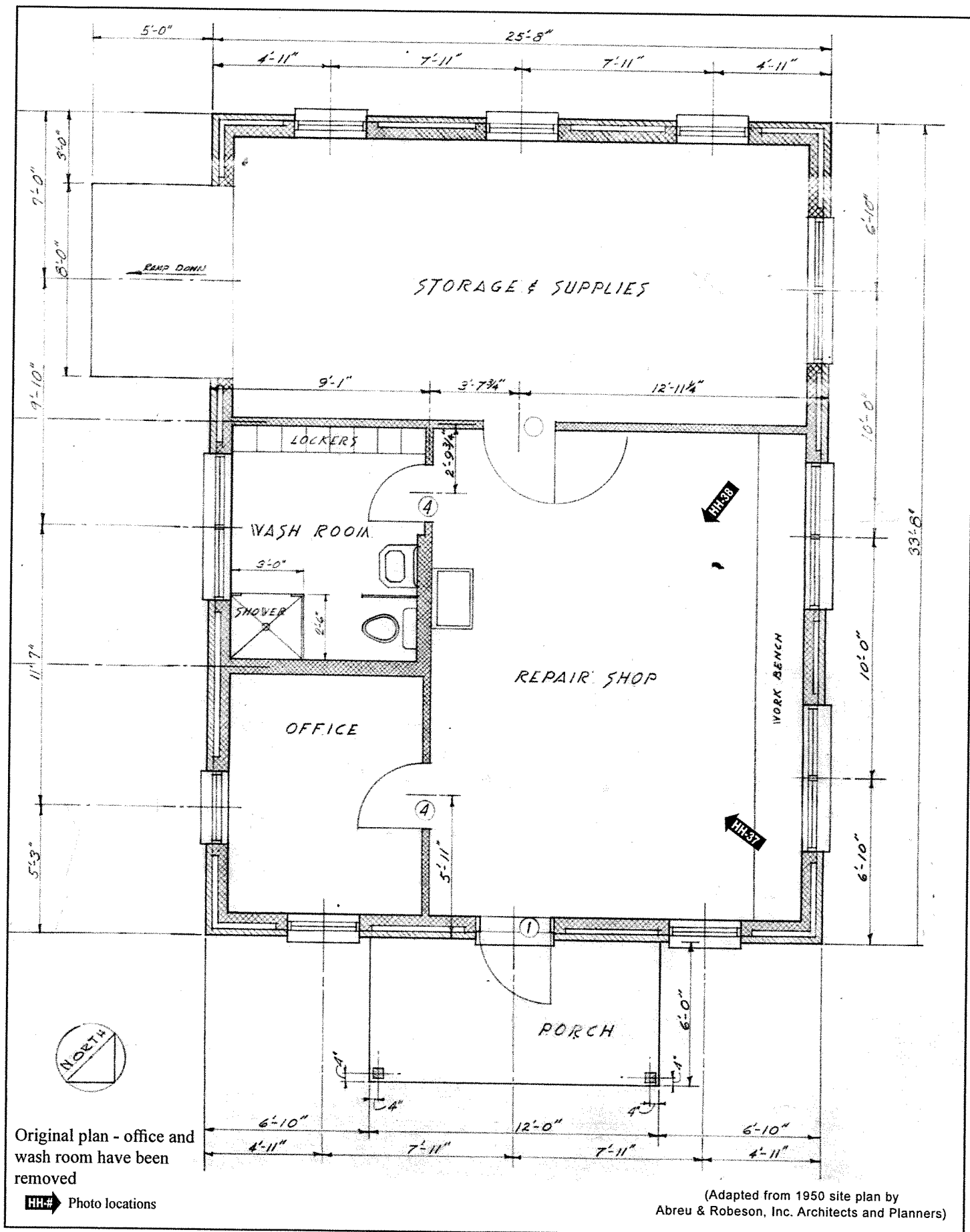
Hillcrest Homes: Photo Locations
 City of East Point, Fulton County, Georgia
 Photographer: TRC (Vince Macek)
 April 2009



Hillcrest Homes: Photo Locations
 City of East Point, Fulton County, Georgia
 Photographer: TRC (Vince Macek)
 April 2009



Hillcrest Homes: Photo Locations
 City of East Point, Fulton County, Georgia
 Photographer: TRC (Vince Macek)
 April 2009



DATE:

ASSIGNMENT:

41

HILLCREST HOMES
CITY OF
EAST POINT, GA.
ROLL #1

KODAK 400TX

42

KODAK 400TX



2

KODAK 400TX

43

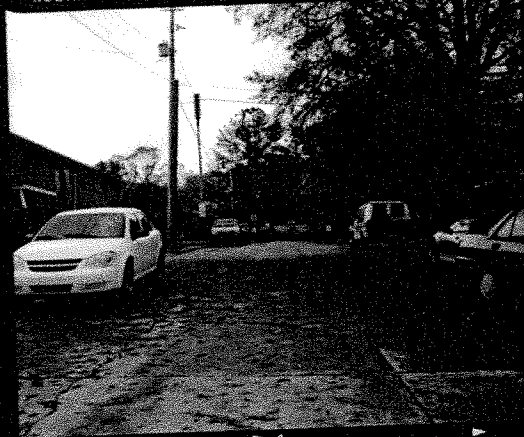


3

KODAK 400TX

44

KODAK 400TX



4

KODAK 400TX

45

46



5

KODAK 400TX

47

KODAK 400TX



6

KODAK 400TX

48

49



8

KODAK 400TX

50

KODAK 400TX



9

KODAK 400TX

51

52



KODAK 400TX

53

KODAK 400TX



54

KODAK 400TX

55



56

DATE:

ASSIGNMENT:

FILE NO:

41

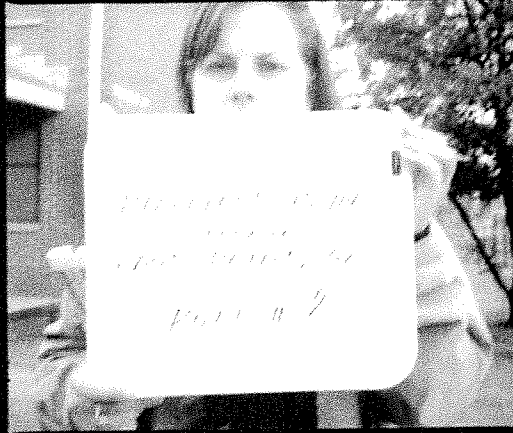
KODAK 400TX

42

KODAK 400TX

43

KO



44

KODAK 400TX

45

KODAK 400TX

46

KODAK 400TX

47

KODAK 400TX



KODAK 400TX

49

KODAK 400TX

50

KODAK 400TX

51

KODAK 400TX

52

K



400TX

53

KODAK 400TX

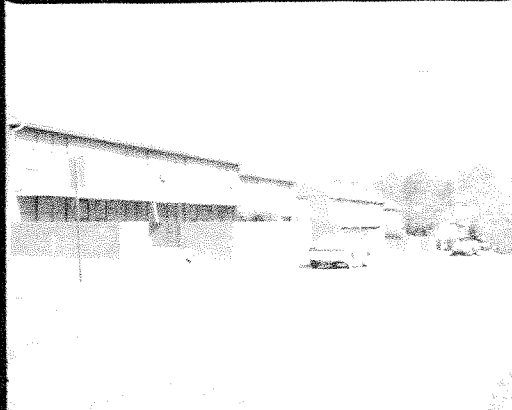
54

KODAK 400TX

55

KODAK 400TX

56



DATE:

ASSIGNMENT:

FILE NO.:

41

KODAK 400TX

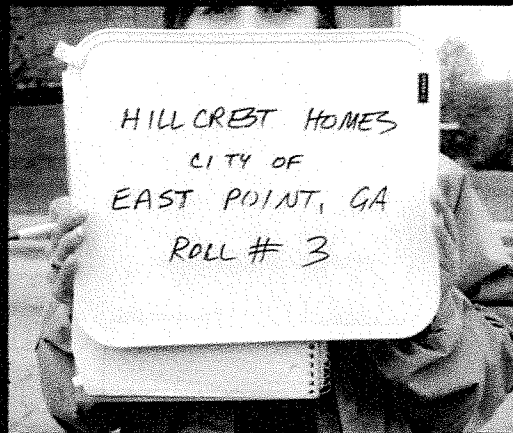
42

KODAK 400TX

43

KODAK 400TX

44



45

KODAK 400TX

46

KODAK 400TX

47

KODAK 400TX

48

KODAK 400TX



49

KODAK 400TX

50

KODAK 400TX

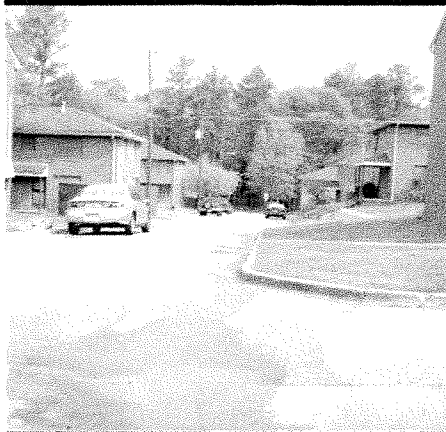
51

KODAK 400TX

52

KODAK 400TX

53



54

KODAK 400TX

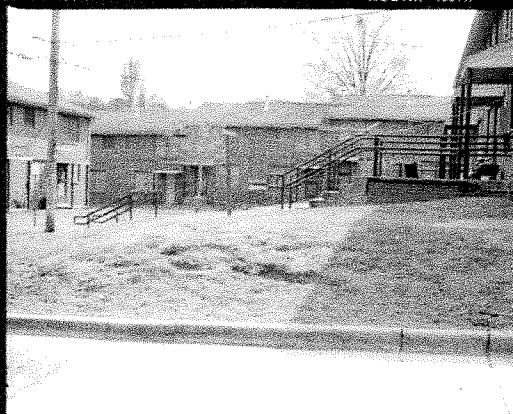
55

KODAK 400TX

56

KODAK 400TX

57



DATE:

ASSIGNMENT:

FILE NO.:

41

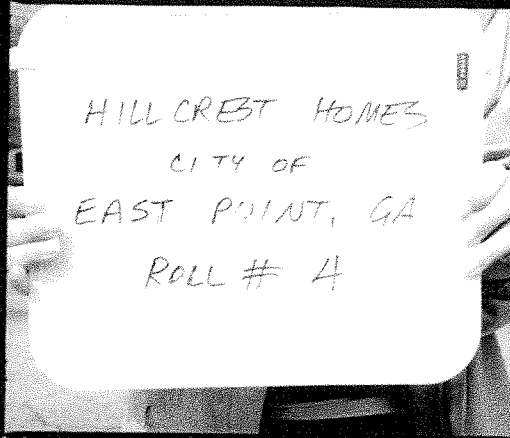
KODAK 400TX

42

KODAK 400TX

43

KODAK 400TX



KODAK 400TX

45

KODAK 400TX

46

KODAK 400TX

47



KODAK 400TX

48

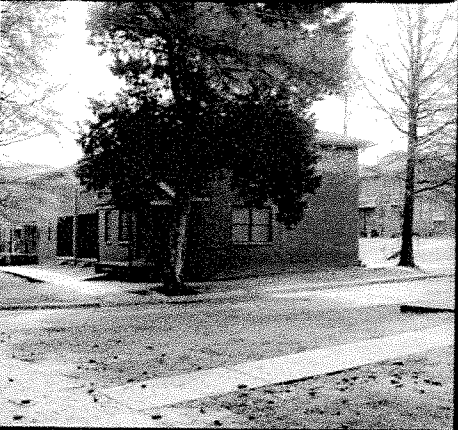
KOD



49

KODAK 400TX

50



KODAK 400TX

51

KODAK 400TX



52

KODAK 400TX



53

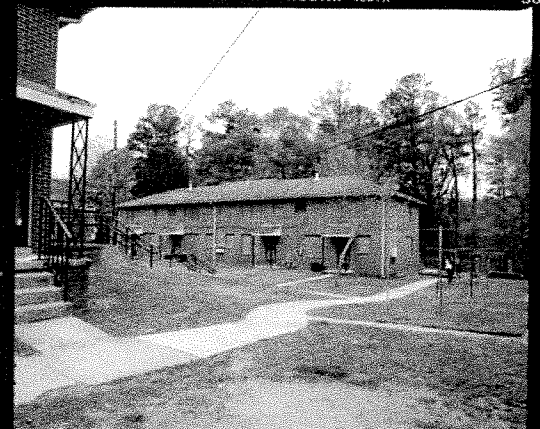
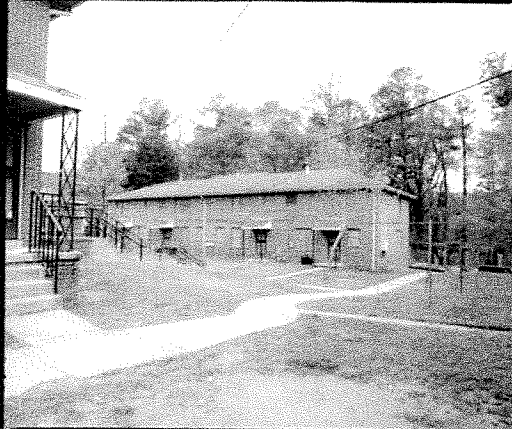
54

KODAK 400TX

55

KODAK 400TX

56



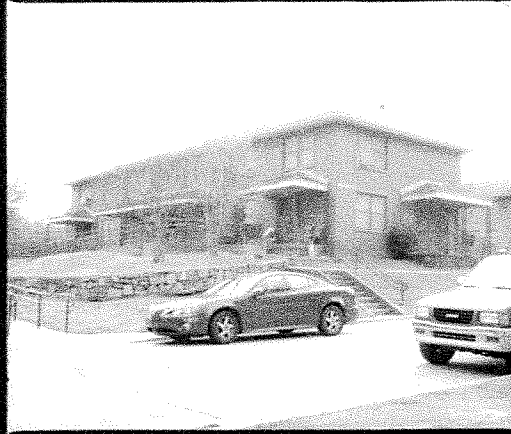
DATE:

ASSIGNMENT:

FILE NO:

41

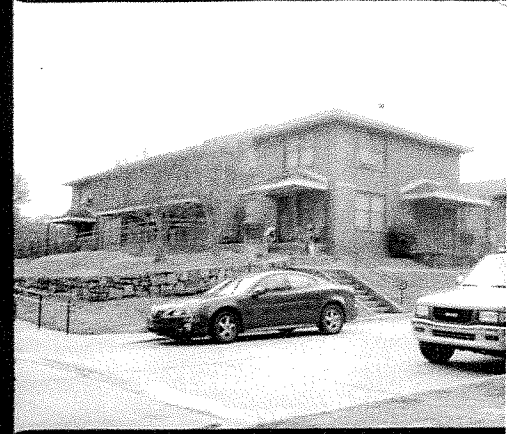
KODAK 400TX



42

KODAK 400TX

43



400TX

44

KODAK 400TX



45

KODAK 400TX

46



KODAK 400TX

47

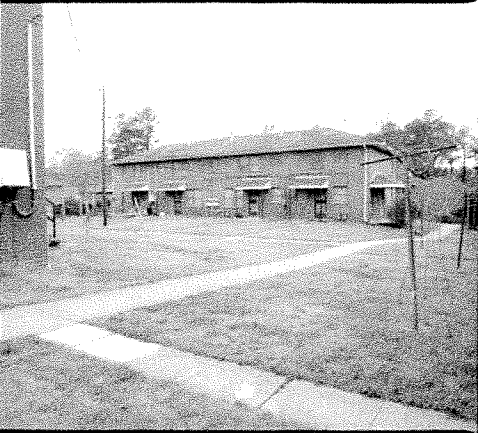
KODAK 400TX



48

KODAK 400TX

49



KODAK 400TX

50

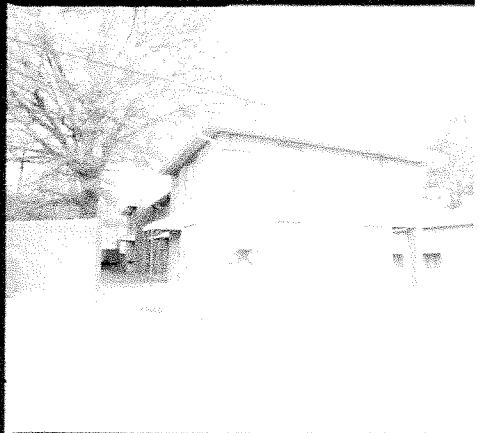
KODAK 400TX



51

KODAK 400TX

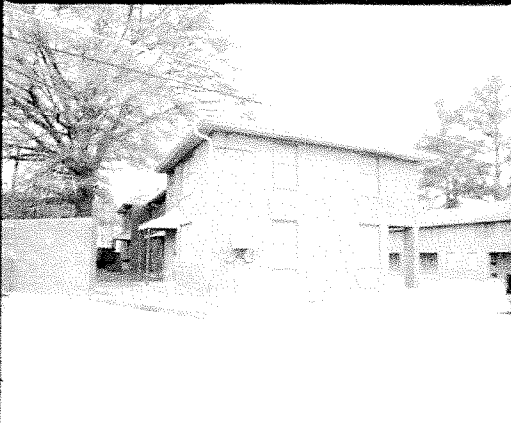
52



KODAK 400TX

53

KODAK 400TX



54

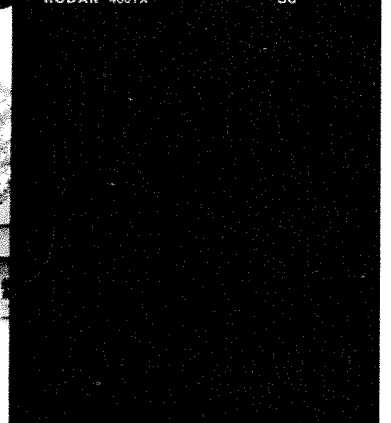
KODAK 400TX

55



KODAK 400TX

56



DATE:

ASSIGNMENT:

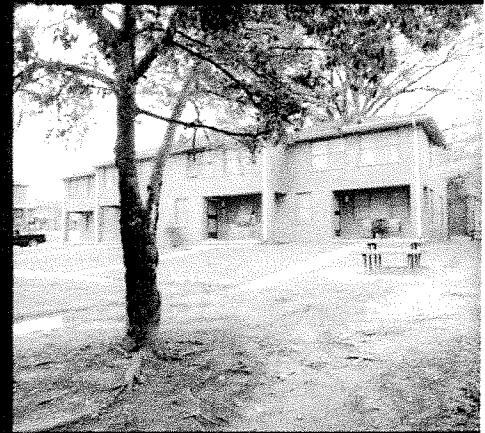
FILE NO.

41

KODAK 400TX

42

KODAK 400TX



KODAK 400TX

44

KODAK 400TX

45

KODAK 400TX

46

KODAK 400TX

47



48

KODAK 400TX

49

KODAK 400TX

50

KODAK 400TX

51

KODAK 400TX



KODAK 400TX

53

KODAK 400TX

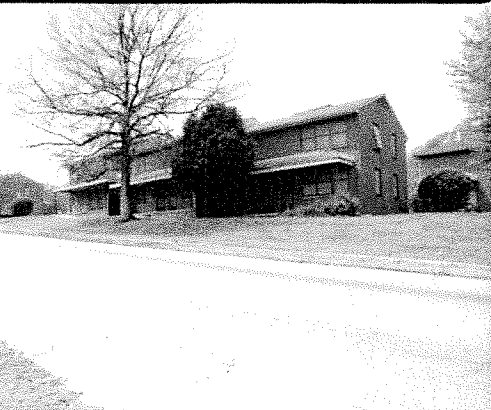
54

KODAK 400TX

55

KODAK 400TX

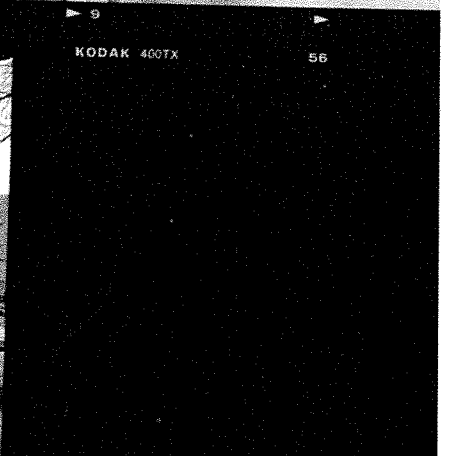
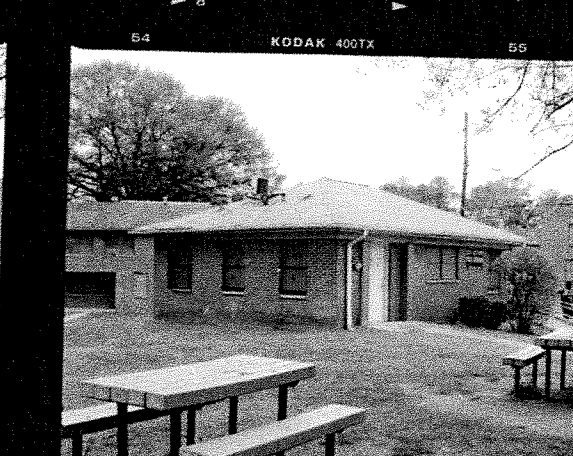
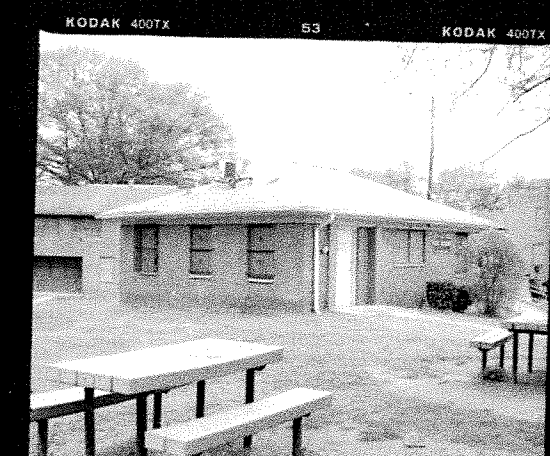
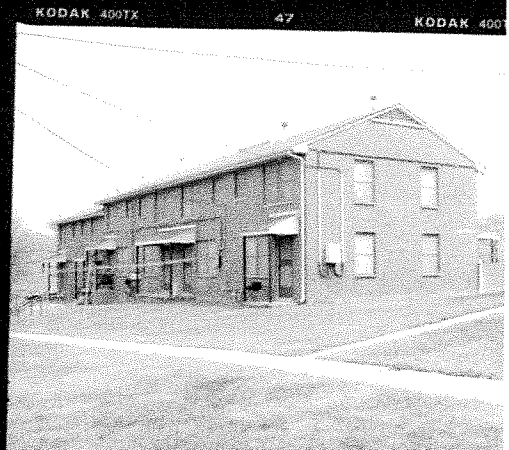
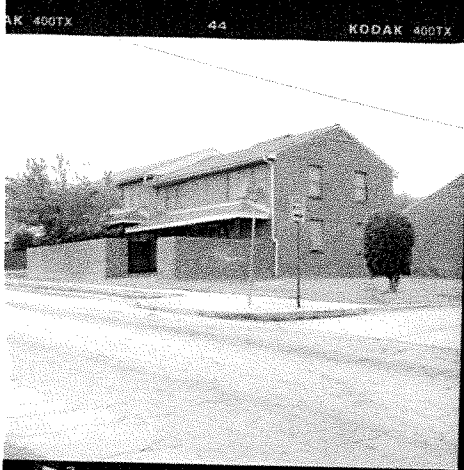
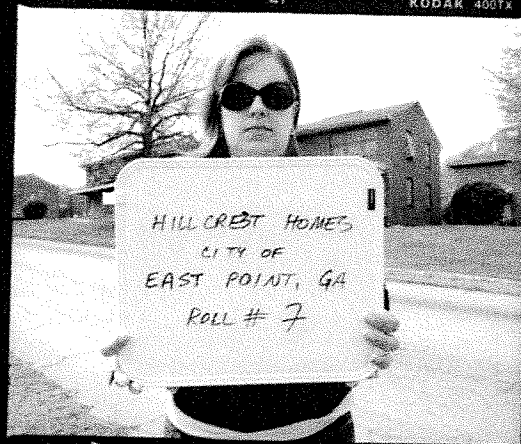
56



DATE:

ASSIGNMENT:

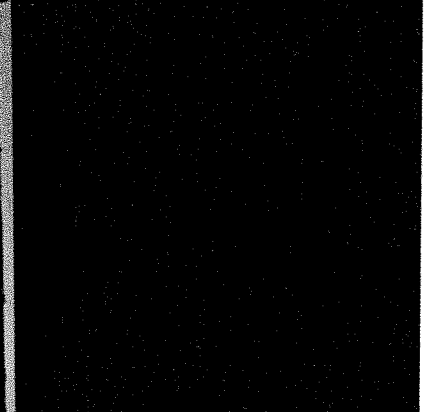
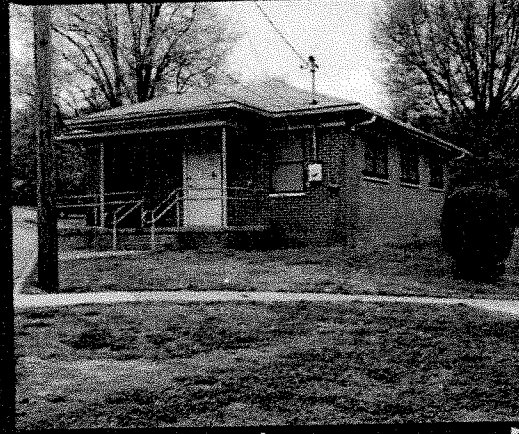
FILE NO:



DATE:

ASSIGNMENT:

FILE NO.



DATE:

ASSIGNMENT:

FILE NO.

41

KODAK 400TX



42

KODAK 400TX

43



44

KODAK 400TX

45

KODAK 400TX

46

KODAK 400TX

47

KODAK 400TX



KODAK 400TX

49

KODAK 400TX

50

KODAK 400TX

51

KODAK 400TX

52



KODAK 400TX

53

KODAK 400TX

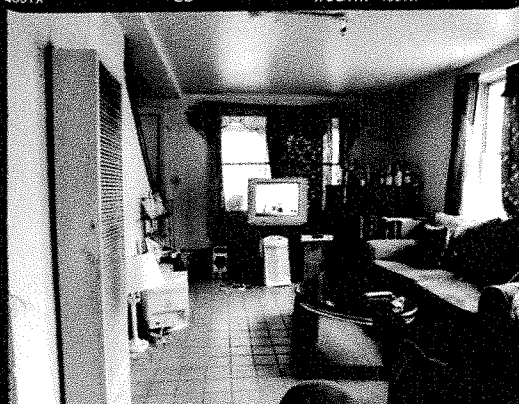
54

KODAK 400TX

55

KODAK 400TX

56



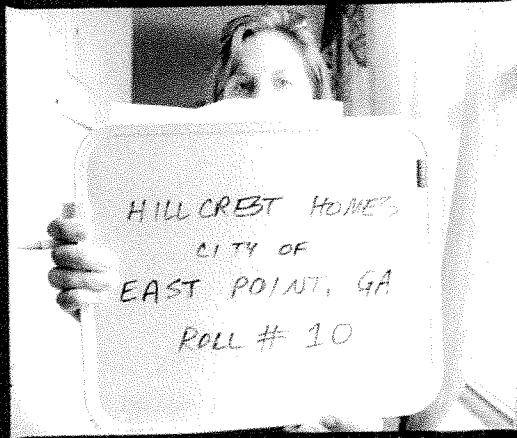
DATE:

ASSIGNMENT:

FILE NO:

41

KODAK 400TX



42

KODAK 400TX

43



KODAK 400TX

44

KODAK 400TX

45

KODAK 400TX

46



KODAK 400TX

47

KODAK



48

KODAK 400TX

49

KODAK 400TX

50

KODAK 400TX

51

KODAK 400TX



KODAK 400TX

53

KODAK 400TX

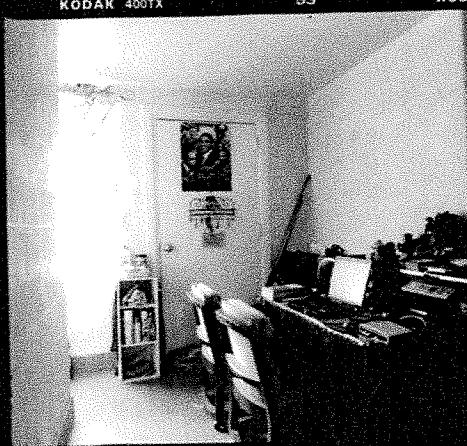
54

KODAK 400TX

55

KODAK 400TX

56



12

x

DATE:

ASSIGNMENT:

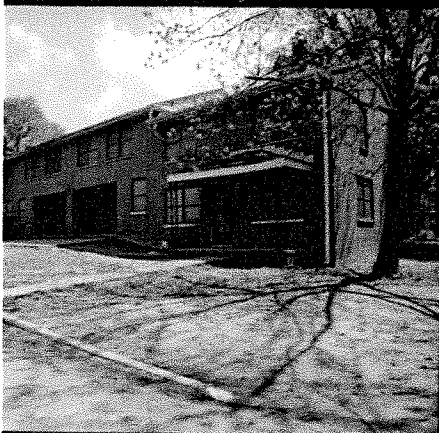
FILE NO.:



ILFORD DELTA 400 PRO



ILFORD DELTA 400 PRO



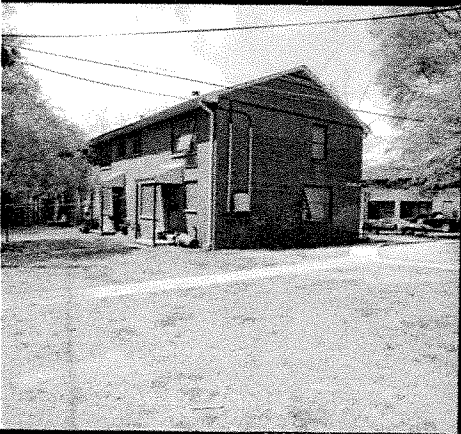
ILFORD DELTA 400 PRO



ILFORD DELTA 400 PRO



ILFORD DELTA 400 PRO



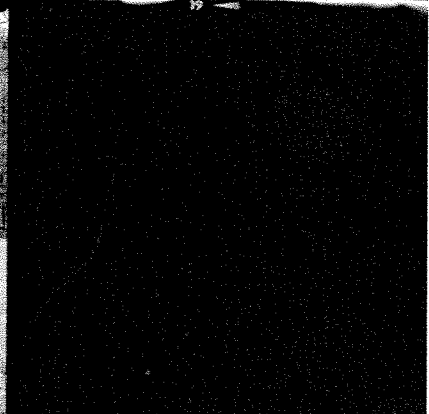
ILFORD DELTA 400 PRO



ILFORD DELTA 400 PRO



ILFORD DELTA 400 PRO



DATE:

ASSIGNMENT:

FILE NO.:

1

2

3

4

5

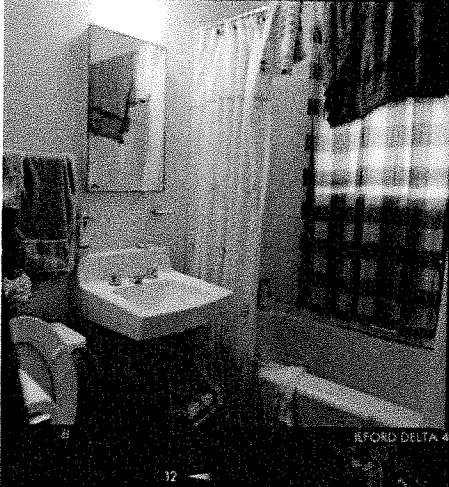


ILFORD DELTA 400 PRO

ILFORD DELTA 400 PRO



ILFORD DELTA 400 PRO



ILFORD DELTA 400 PRO



ILFORD DELTA 400 PRO



ILFORD DELTA 400 PRO



ILFORD DELTA 400 PRO



ILFORD DELTA 400 PRO



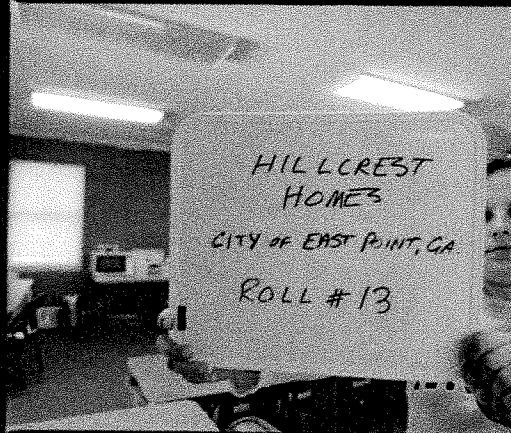
ILFORD DELTA 400 PRO



DATE:

ASSIGNMENT:

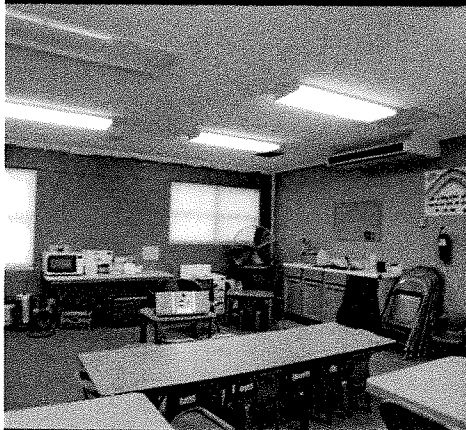
FILE NO.:



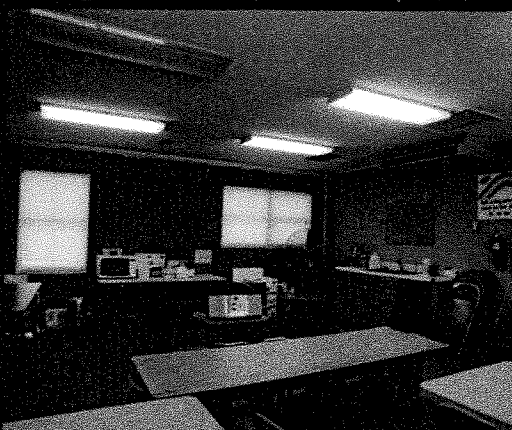
ILFORD DELTA 400 PRO



ILFORD DELTA 400 PRO



ILFORD DELTA 400 PRO



ILFORD DELTA 400 PRO



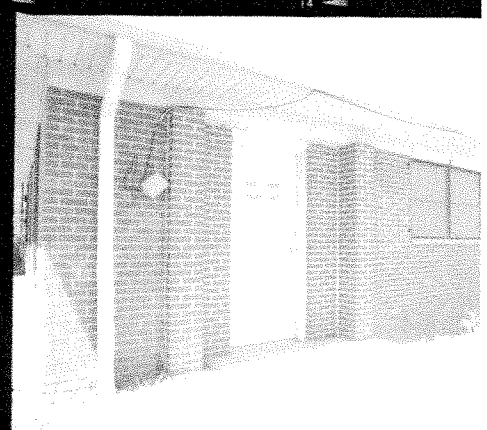
ILFORD DELTA 400 PRO



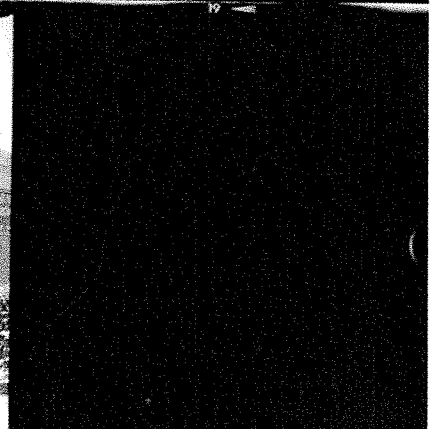
ILFORD DELTA 400 PRO



ILFORD DELTA 400 PRO



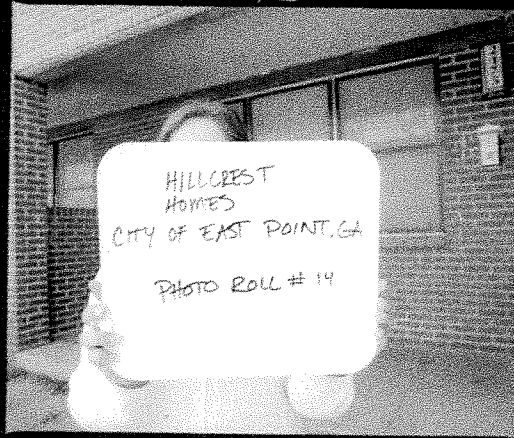
ILFORD DELTA 400 PRO



DATE

ASSIGNMENT

FILE NO.



ILFORD DELTA 400 PRO

ILFORD DELTA 400 PRO



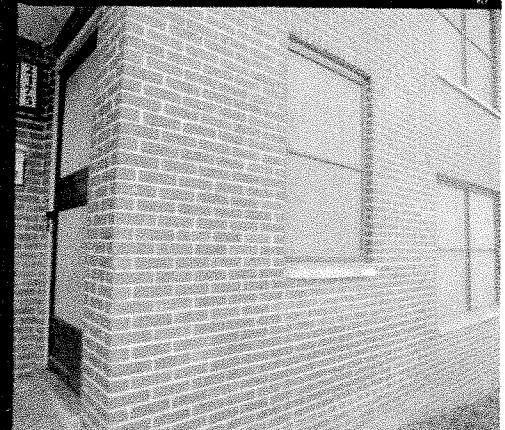
ILFORD DELTA 400 PRO



ILFORD DELTA 400 PRO



ILFORD DELTA 400 PRO



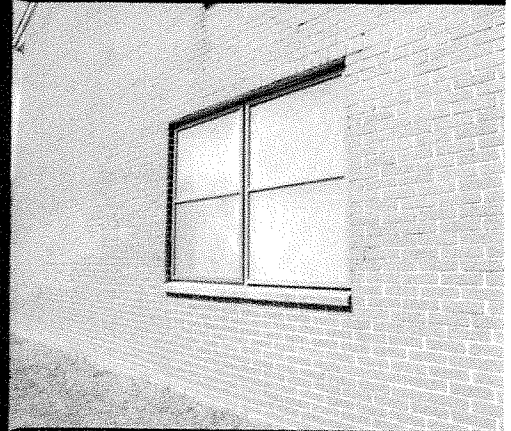
ILFORD DELTA 400 PRO



ORD DELTA 400 PRO



ILFORD DELTA 400 PRO



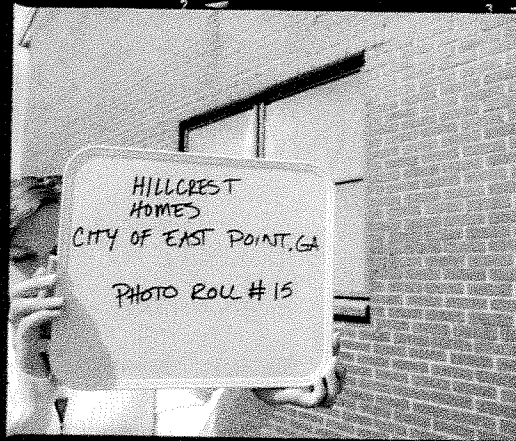
ILFORD DELTA 400 PRO



DATE:

ASSIGNMENT:

FILE NO.:



ILFORD DELTA 400 PRO

ILFORD DELTA 400 PRO

ILFORD DELTA 400 PRO



ILFORD DELTA 400 PRO



ILFORD DELTA 400 PRO



ILFORD DELTA 400 PRO



ILFORD DELTA 400 PRO



ILFORD DELTA 400 PRO



ILFORD DELTA 400 PRO

ILFORD DELTA 400 PRO



ILFORD DELTA 400 PRO



ILFORD DELTA 400 PRO

APPENDIX B:
WASHINGTON CARVER HOMES PHOTOGRAPHIC DOCUMENTATION

**PUBLIC HOUSING IN EAST POINT, FULTON COUNTY,
GEORGIA:**

PHOTOGRAPHIC DOCUMENTATION

WASHINGTON CARVER HOMES

Submitted to:

HOUSING AUTHORITY OF EAST POINT
3056 Norman Berry Drive
East Point, GA 30344

Submitted by:

TRC
4155 Shackleford Road Suite 225
Norcross, GA 30093

HP-070219-001

June 2009

TABLE OF CONTENTS

Project Purpose and Photographic Numbering System	1
Setting	1
Architectural Description.....	1
Statement of Significance	2
Geographic Location.....	3
UTM Coordinates	3
Washington Carver Homes Location Map	4
Photo Log.....	5
Photo Location Maps	7
Overall Site Plan	7
Building Type A	8
Building Type B.....	9
Building Type C.....	10
Building Type D	11
Contact Sheets	
Negatives--located at Georgia Department of Natural Resources, Historic Preservation Division	

Project Purpose and Photographic Numbering System:

Between March and April, 2009, TRC conducted historical research and recordation of the Washington Carver Homes in the City of East Point, Georgia. Pursuant to 36 CFR Part 800, regulations implementing Section 106 of the National Historic Preservation Act of 1966, this project was carried out under the Memorandum of Agreement (MOA) between the U.S. Department of Housing and Urban Development, through the Housing Authority of East Point and the Georgia Department of Natural Resources, Historic Preservation Division. The goal of the project was to provide a comprehensive history of public housing in the City of East Point and to provide a permanent archival record of the development prior to the disposition of the property. The permanent archival record is comprised of medium format photography and copies of the original site plans and floor plans.

The photographs are numbered with the abbreviation of Washington Carver Homes (WCH) and then a number corresponding to the order of the photographic views. As three exposures for each view were taken on each roll, the leader frame is labeled with the roll number and each view is either frames 2–4, 5–7, or 8–10; one unique number is used for the three views. For example, the photograph numbered WCH-4 corresponds to Roll 2, Frames 2 through 4.

Setting:

Washington Carver Homes was developed on vacant land just west of the East Point Elementary and High School and east of Norman Berry Drive. The complex is bounded on the north by Washington Avenue, baseball fields and a parking lot for the school on the west, and woods to the south and east. Veterans Street and Washington Circle form a horseshoe through the middle of the site around which individual building blocks are placed at regular intervals. The central orientation of the Washington Carver Homes is a feature characteristic of early housing projects. The complex attempted to foster a strong sense of community in a layout that appeared residential and resembled single-family dwellings. Individual building blocks, containing individual housing units, are detached and oriented in identical setbacks to the street. Those buildings along the exterior of the horseshoe are angled with the curvature of the street. The buildings in the interior of the horseshoe face either east or west. To the south of the complex is a cleared area, which was originally designed as the children's play area. This area has been abandoned and two playgrounds were instead located at the western and eastern areas of the complex in 1994.

Architectural Description:

The Washington Carver Homes has 20 residential housing blocks. The housing units are categorized along four different building types, distinguishable by the number of bedrooms ranging from one to four. Rectangular in shape, the units are constructed of concrete block with a common bond brick veneer on the exterior. The building blocks are covered by hipped or side-gable roofs clad with replacement asphalt shingles. The residential building blocks have spacious front porches characterized by projecting, half-hipped roofs supported by metal posts with an inset diamond pattern. The units feature one-over-one double-hung wood sash windows on pre-cast concrete sills in three types:

Washington Carver Homes (HP-070219-001)
City of East Point, Fulton County, Georgia
TRC-March-May 2009

single, paired, and tripled. The floor plan is similar to the ranch style characterized by entry into a living room that opens into a kitchen.

Statement of Significance:

The Washington Carver Homes has been determined eligible for listing in the National Register of Historic Places under Criterion A for the role it played locally in meeting a national housing crisis as part of the federal housing programs. It is also eligible under Criterion C for architecture as a well-intact example of public housing constructed during the early period of public housing (ca. 1930–1950), which emphasized strong, planned communities.

Washington Carver Homes (HP-070219-001)
City of East Point, Fulton County, Georgia
TRC-March-May 2009

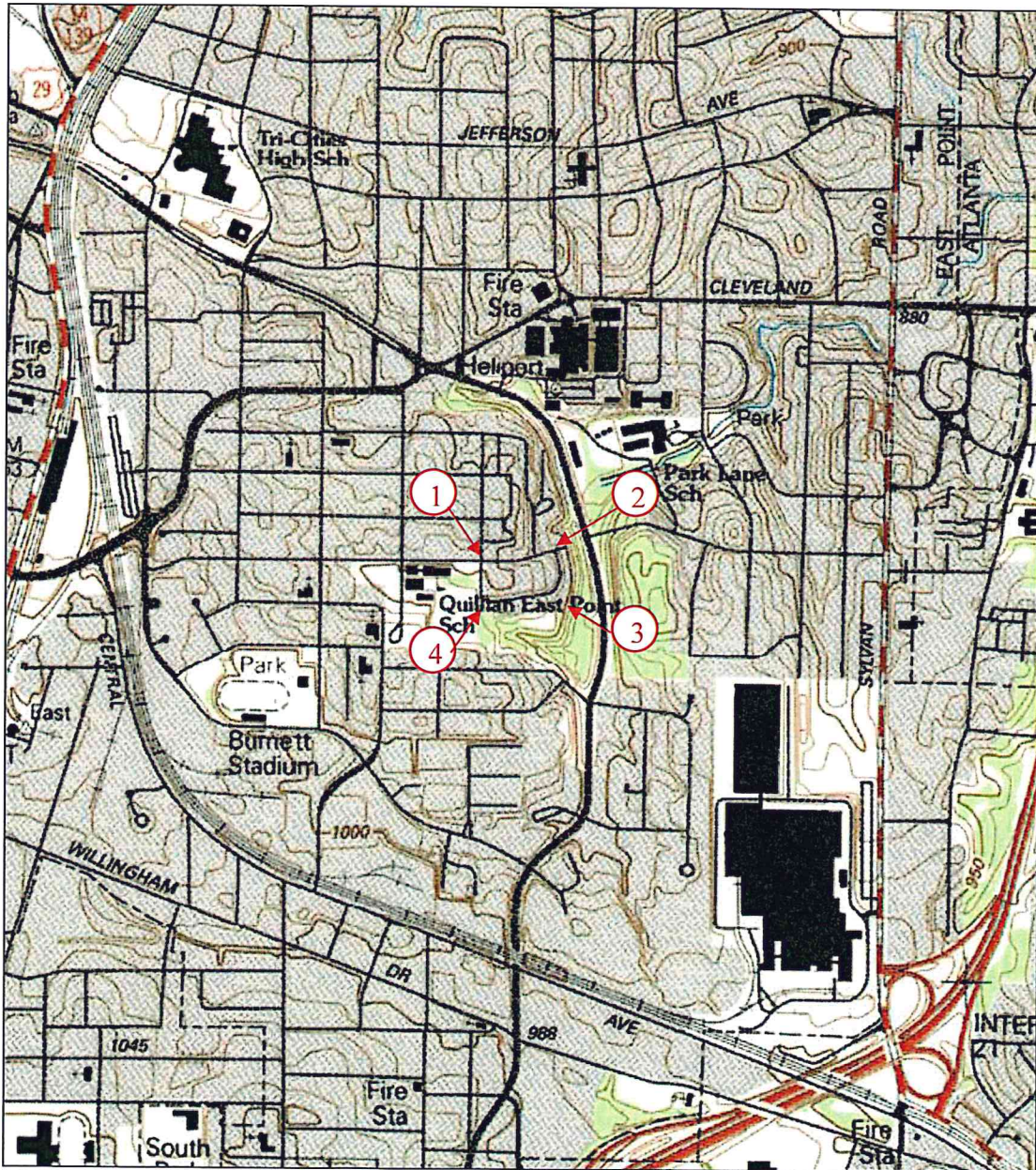
Geographic Location:

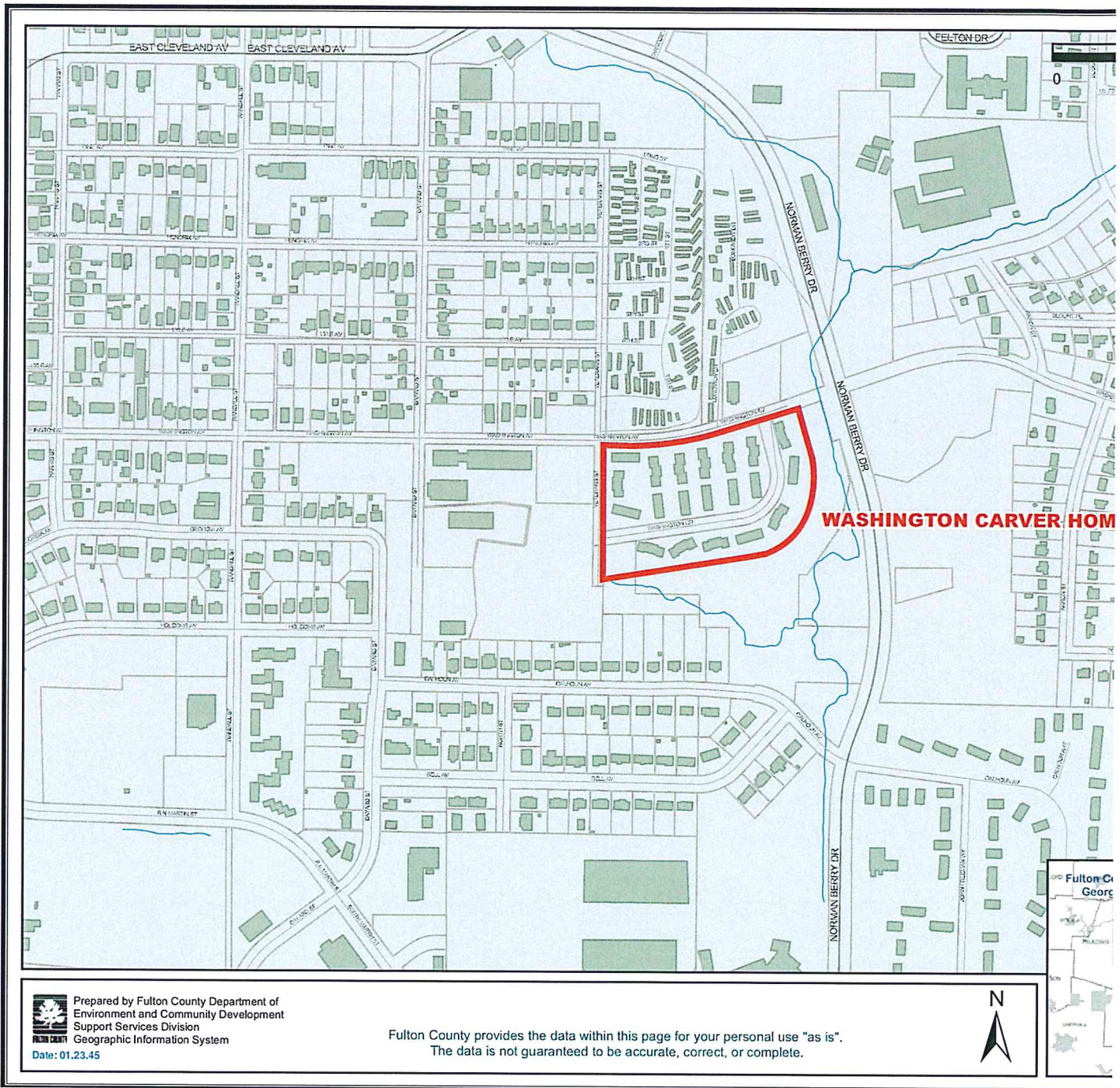
1232 Washington Avenue
City of East Point
Fulton County, GA

UTM Coordinates: (NAD 27)

UTM 16

1. Easting: 0738324	Northing: 3728968
2. Easting: 0738533	Northing: 3729016
3. Easting: 0738567	Northing: 3728890
4. Easting: 0738324	Northing: 3728838





Washington Carver Homes
City of East Point, Fulton County, Georgia

9-001)
orgia

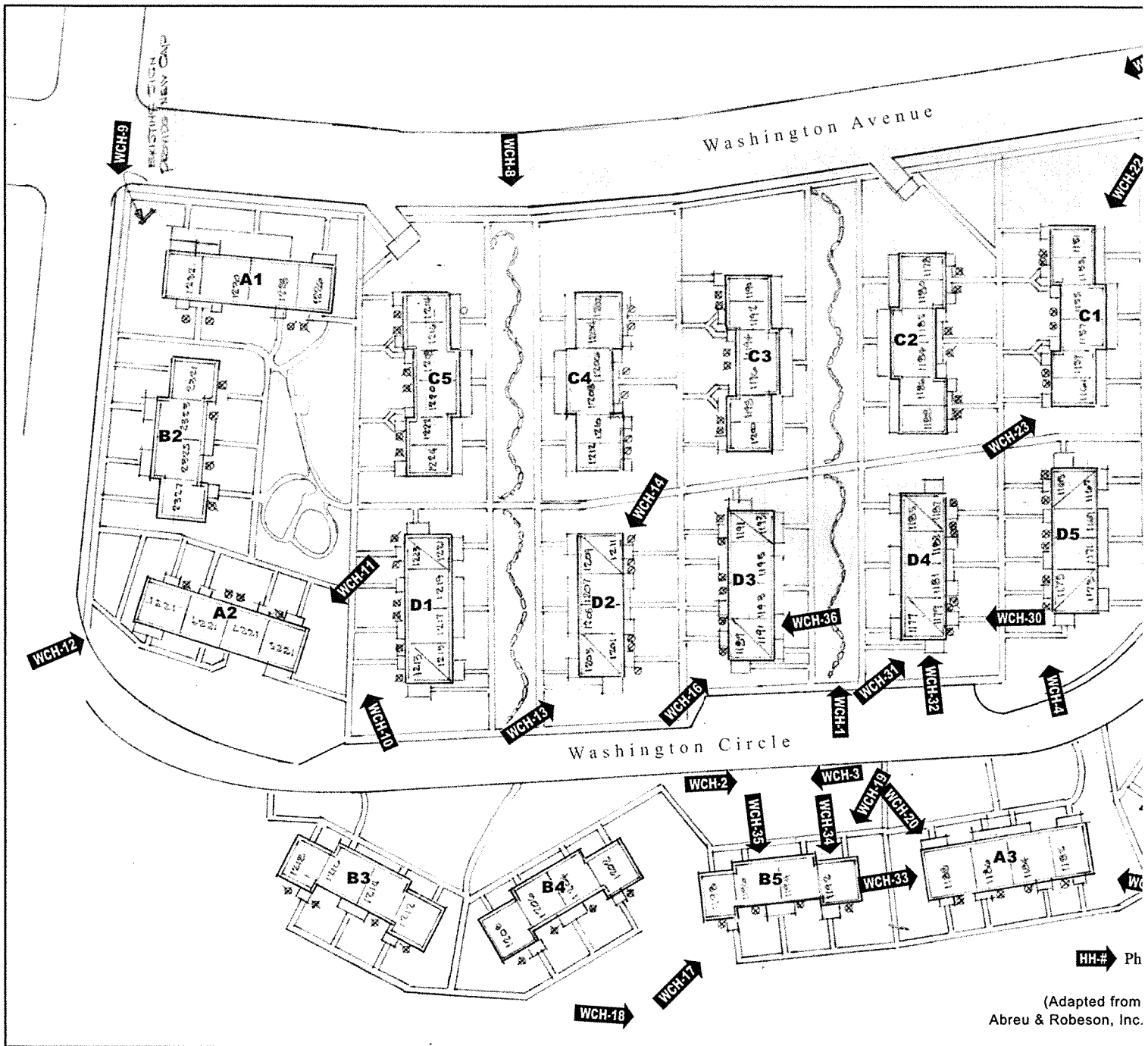
ent of Natural Resources, Historic Preservation Division

E	ADDRESS	DIRECTION	ROLL #	FRAME #	DATE OF PHOTOGRAPH
AND D4	1232 WASHINGTON AVENUE	FACING EAST	1	2-4	APRIL 15, 2009
AND D5	1232 WASHINGTON AVENUE	FACING EAST	1	5-7	APRIL 15, 2009
, AND A2	1232 WASHINGTON AVENUE	FACING SOUTH	1	8-10	APRIL 15, 2009
AND D5	1232 WASHINGTON AVENUE	FACING NORTH	2	2-4	APRIL 15, 2009
AND D5	1232 WASHINGTON AVENUE	FACING NORTH	2	5-7	APRIL 15, 2009
D1 THRU D5	1232 WASHINGTON AVENUE	FACING WEST	2	8-10	APRIL 15, 2009
AND A1	1232 WASHINGTON AVENUE	FACING NORTH	3	2-4	APRIL 15, 2009
AND D2	1232 WASHINGTON AVENUE	FACING SOUTH	3	5-7	APRIL 15, 2009
ND B2	1232 WASHINGTON AVENUE	FACING SOUTH	3	8-10	APRIL 15, 2009
AND B2	1232 WASHINGTON AVENUE	FACING NORTH	4	2-4	APRIL 15, 2009
	UNITS 1225, 1227, 1229, AND 1231, 1232 WASHINGTON AVENUE	FACING SOUTHWEST	4	5-7	APRIL 15, 2009
	UNITS 1225, 1227, 1229, AND 1231, 1232 WASHINGTON AVENUE	FACING NORTHEAST	4	8-10	APRIL 15, 2009
	UNITS 1201, 1203, 1205, 1207, 1209 AND 1211, 1232 WASHINGTON AVENUE	FACING NORTHEAST	5	2-4	APRIL 15, 2009
	UNITS 1201, 1203, 1205, 1207, 1209 AND 1211, 1232 WASHINGTON AVENUE	FACING SOUTHWEST	5	5-7	APRIL 15, 2009
	UNITS 1189, 1191, 1193, 1195, 1197 AND 1199, 1232 WASHINGTON AVENUE	FACING SOUTHWEST	5	8-10	APRIL 15, 2009
	UNITS 1189, 1191, 1193, 1195, 1197 AND 1199, 1232 WASHINGTON AVENUE	FACING NORTHEAST	6	1-4	APRIL 15, 2009
	UNITS 1192, 1194, 1196, AND 1198, 1232 WASHINGTON AVENUE	FACING NORTHEAST	6	5-7	APRIL 15, 2009
EA	1232 WASHINGTON AVENUE	FACING SOUTHEAST	6	8-10	APRIL 15, 2009
	UNITS 1192, 1194, 1196, AND 1198, 1232 WASHINGTON AVENUE	FACING SOUTHWEST	7	2-4	APRIL 15, 2009
	UNITS 1182, 1184, 1186, AND 1188, 1232 WASHINGTON AVENUE	FACING SOUTHEAST	7	5-7	APRIL 15, 2009
	UNITS 1182, 1184, 1186, AND 1188, 1232 WASHINGTON AVENUE	FACING NORTHWEST	7	8-10	APRIL 15, 2009
	UNITS 1151, 1153, 1155, 1157, 1159, AND 1161, 1232 WASHINGTON AVENUE	FACING SOUTHWEST	8	2-4	APRIL 15, 2009
	UNITS 1151, 1153, 1155, 1157, 1159, AND 1161, 1232 WASHINGTON AVENUE	FACING NORTHEAST	8	5-7	APRIL 15, 2009
LAYGROUND	1232 WASHINGTON AVENUE	FACING NORTHEAST	8	8-10	APRIL 15, 2009

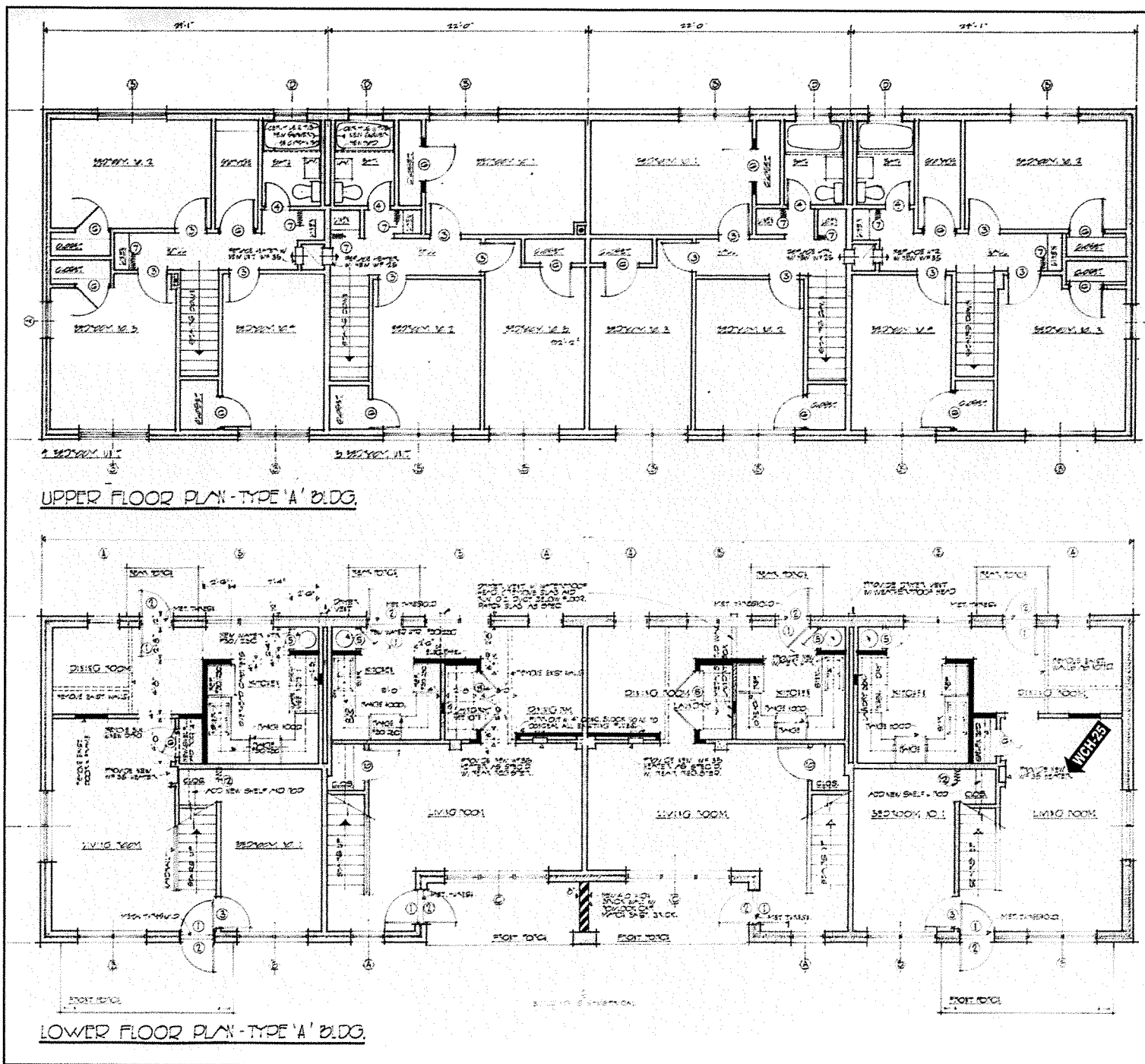
9-001)
orgia

ent of Natural Resources, Historic Preservation Division

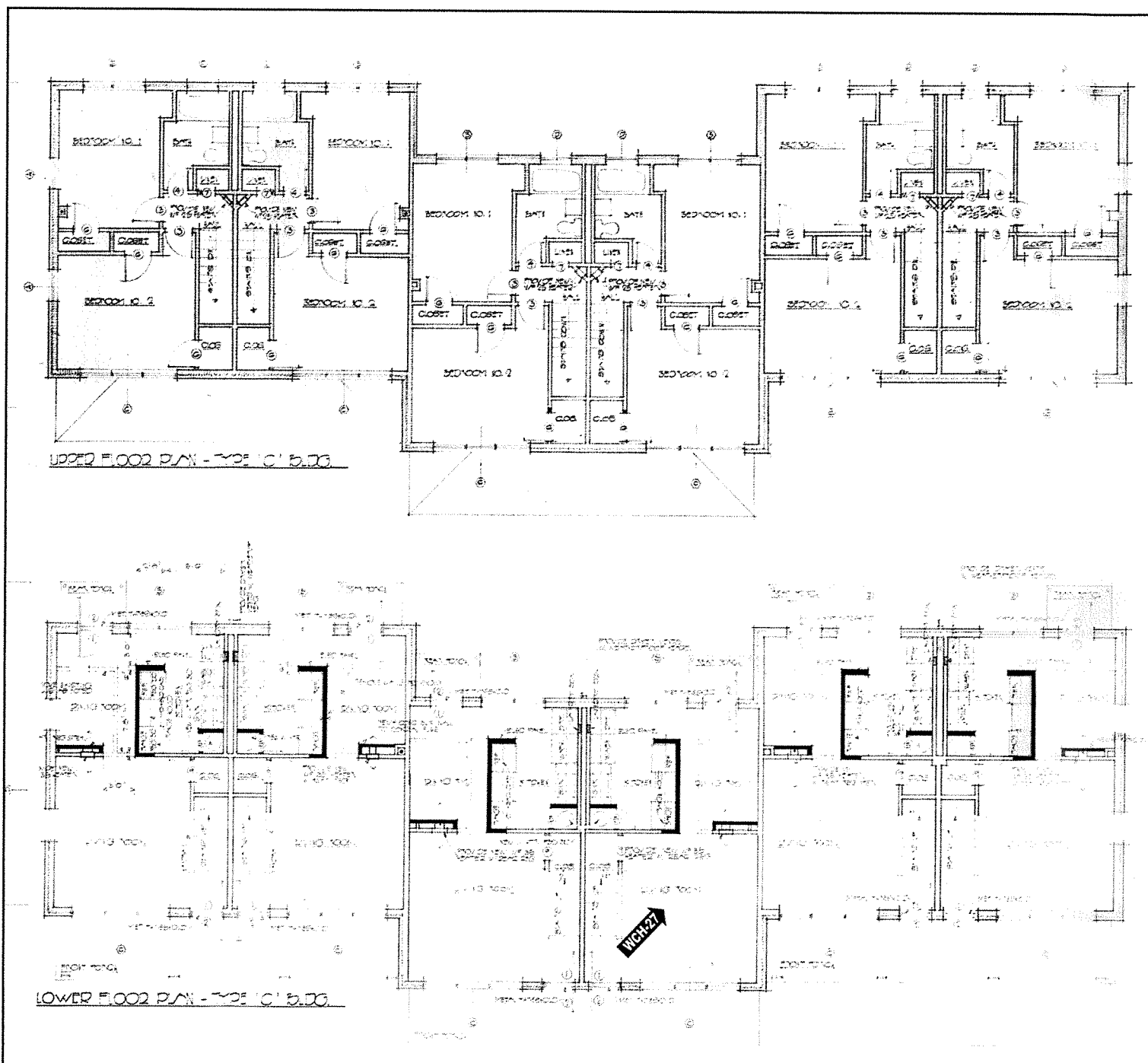
	ADDRESS	DIRECTION	ROLL #	FRAME #	DATE OF PHOTOGRAPH
ROOM)	UNIT 1168, 1232 WASHINGTON AVENUE	FACING NORTHEAST	9	2-4	APRIL 15, 2009
ROOM)	UNIT 1158, 1232 WASHINGTON AVENUE	FACING SOUTHEAST	9	5-7	APRIL 15, 2009
ROOM)	UNIT 1155, 1232 WASHINGTON AVENUE	FACING NORTHWEST	9	8-10	APRIL 15, 2009
ROOM)	UNIT 1173, 1232 WASHINGTON AVENUE	FACING SOUTHEAST	10	2-4	APRIL 15, 2009
EN)	UNIT 1173, 1232 WASHINGTON AVENUE	FACING NORTHEAST	10	5-7	APRIL 15, 2009
DETAIL)	UNIT 1179, 1232 WASHINGTON AVENUE	FACING NORTHEAST	10	8-10	APRIL 15, 2009
DETAIL)	UNIT 1177, 1232 WASHINGTON AVENUE	FACING NORTH	11	2-4	APRIL 15, 2009
DETAIL)	UNIT 1179, 1232 WASHINGTON AVENUE	FACING NORTH	11	5-7	APRIL 15, 2009
DETAIL)	UNIT 1188, 1232 WASHINGTON AVENUE	FACING SOUTHWEST	11	8-10	APRIL 15, 2009
INDOW)	UNIT 1192, 1232 WASHINGTON AVENUE	FACING SOUTHEAST	12	2-4	APRIL 15, 2009
INDOW)	UNIT 1196, 1232 WASHINGTON AVENUE	FACING SOUTHWEST	12	5-7	APRIL 15, 2009
INDOW)	UNIT 1191, 1232 WASHINGTON AVENUE	FACING SOUTHWEST	12	8-10	APRIL 15, 2009



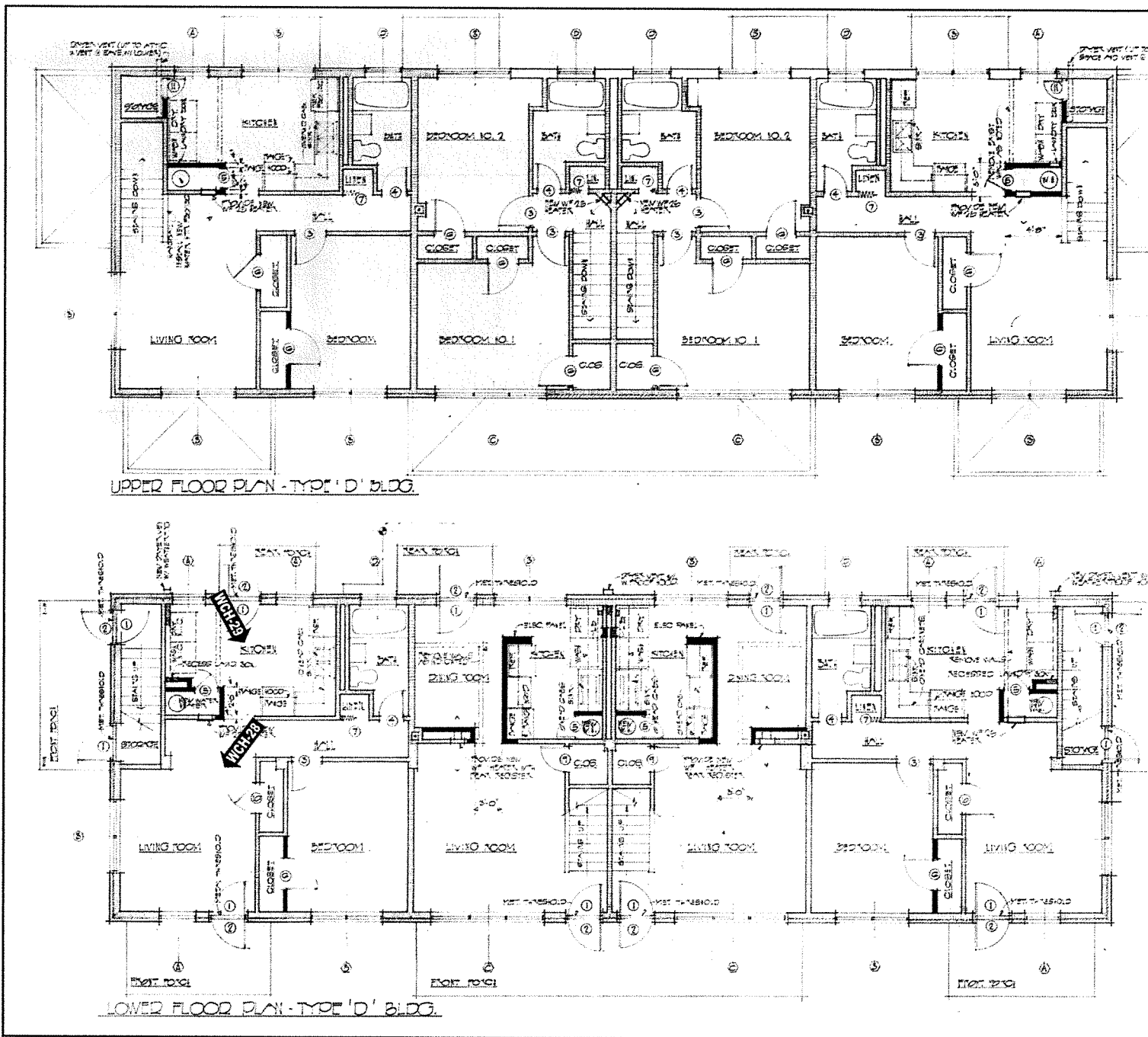
Washington Carver Homes: Photo Locations
 City of East Point, Fulton County, Georgia
 Photographer: TRC (Vince Macek)
 April 2009



Washington Carver Homes: Photo Locations
 City of East Point, Fulton County, Georgia
 Photographer: TRC (Vince Macek)
 April 2009



Washington Carver Homes: Photo Locations
 City of East Point, Fulton County, Georgia
 Photographer: TRC (Vince Macek)
 April 2009

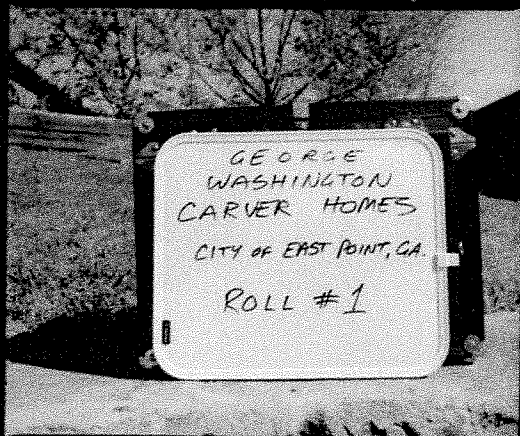


Washington Carver Homes: Photo Locations
 City of East Point, Fulton County, Georgia
 Photographer: TRC (Vince Macek)
 April 2009

DATE:

ASSIGNMENT:

FILE NO.:



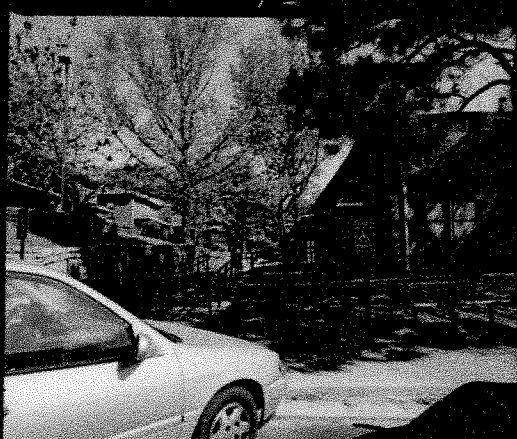
ILFORD DELTA 400 PRO

ILFORD DELTA 400 PRO

ILFORD DELTA 400 PRO



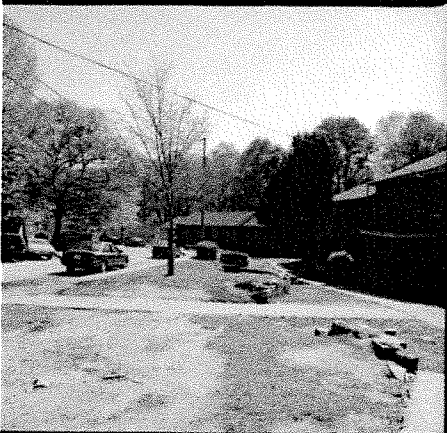
ILFORD DELTA 400 PRO



ILFORD DELTA 400 PRO



ILFORD DELTA 400 PRO



ILFORD DELTA 400 PRO



ILFORD DELTA 400 PRO



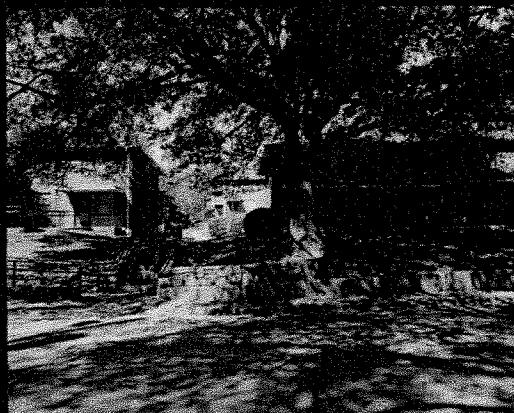
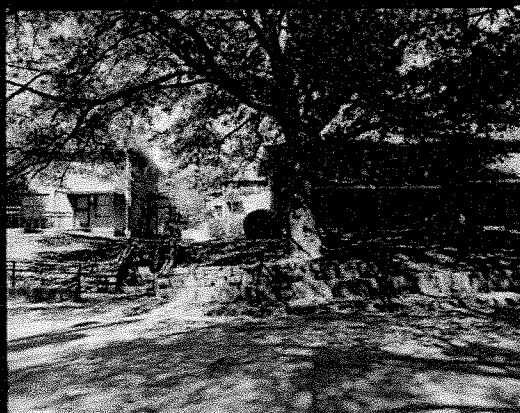
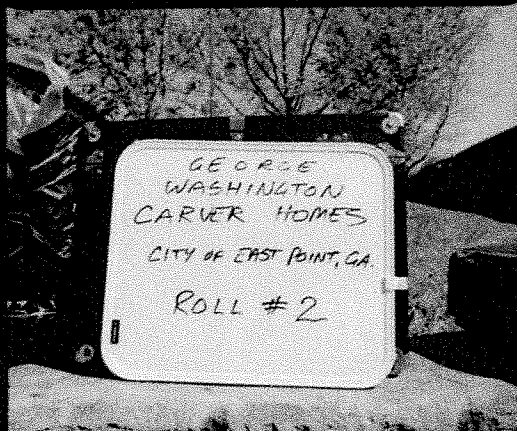
ILFORD DELTA 400 PRO



DATE:

ASSIGNMENT:

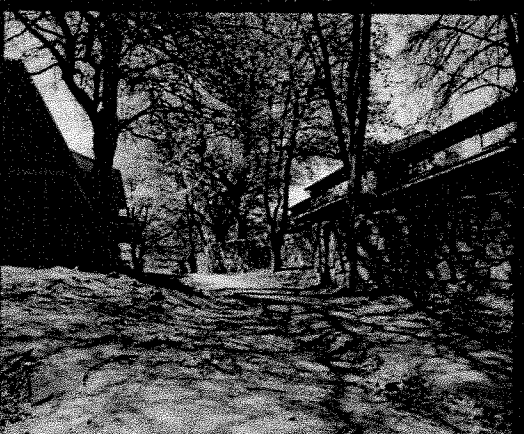
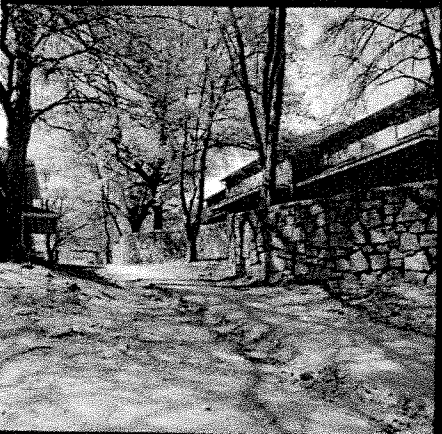
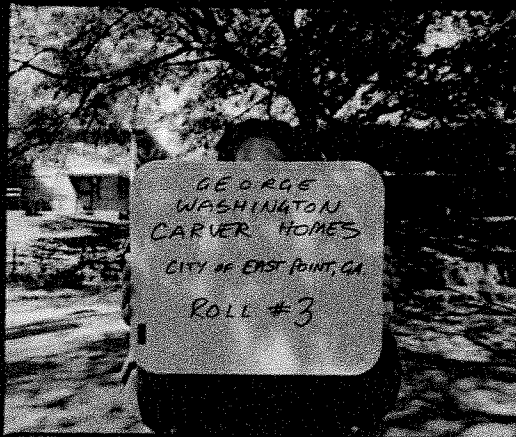
FILE NO.



DATE:

ASSIGNMENT:

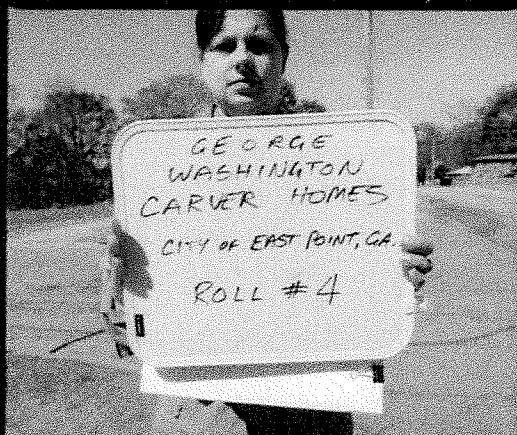
FILE NO:



DATE:

ASSIGNMENT:

FILE NO.:



ILFORD DELTA 400 PRO

ILFORD DELTA 400 PRO

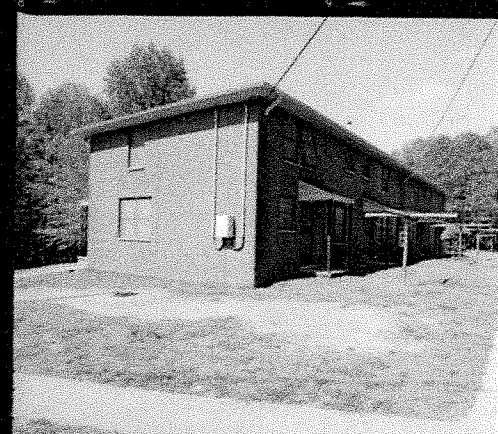
ILFORD DELTA 400 PRO



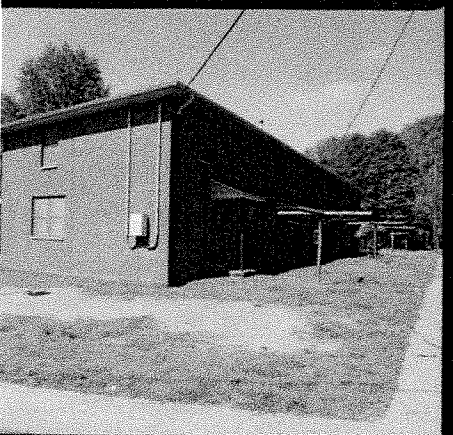
ILFORD DELTA 400 PRO



ILFORD DELTA 400 PRO



ILFORD DELTA 400 PRO



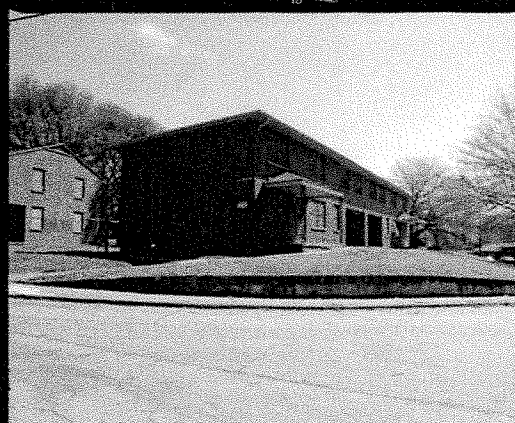
ILFORD DELTA 400 PRO



ILFORD DELTA 400 PRO



ILFORD DELTA 400 PRO



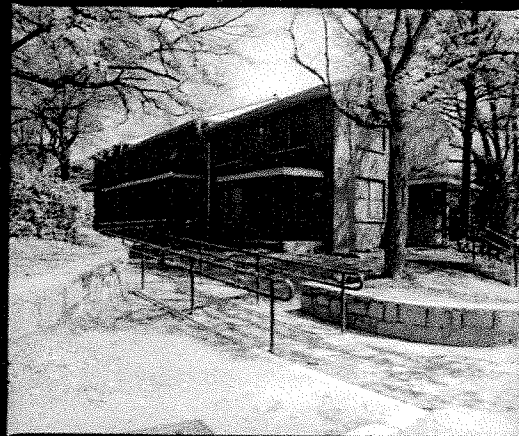
DATE:

ASSIGNMENT:

FILE NO:



ILFORD DELTA 400 PRO



ILFORD DELTA 400 PRO

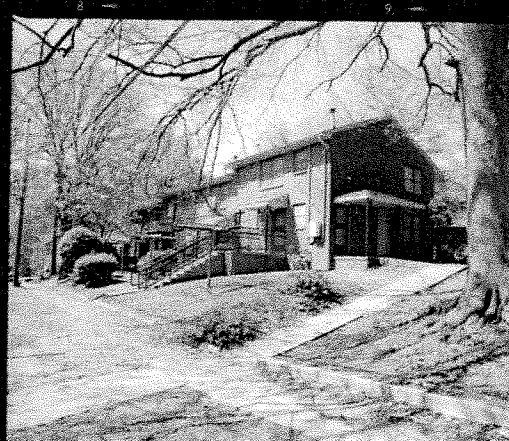
ILFORD DELTA 400 PRO



ILFORD DELTA 400 PRO



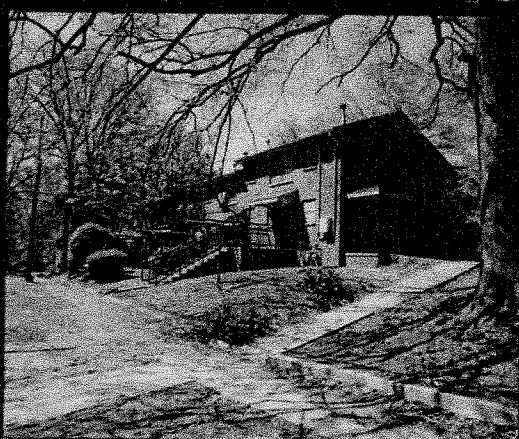
ILFORD DELTA 400 PRO



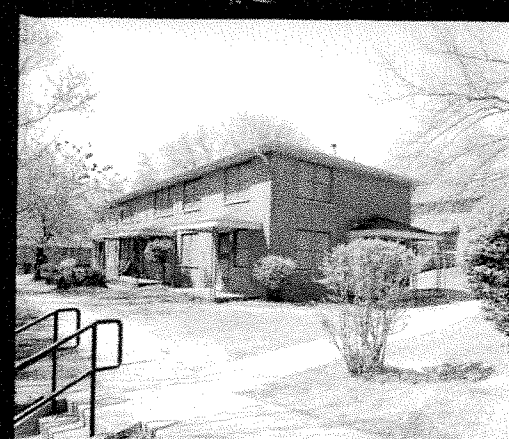
ILFORD DELTA 400 PRO



ILFORD DELTA 400 PRO



ILFORD DELTA 400 PRO



ILFORD DELTA 400 PRO



DATE:

ASSIGNMENT:

FILE NO.:



ILFORD DELTA 400 PKO

ILFORD DELTA 400 PKO



ILFORD DELTA 400 PKO



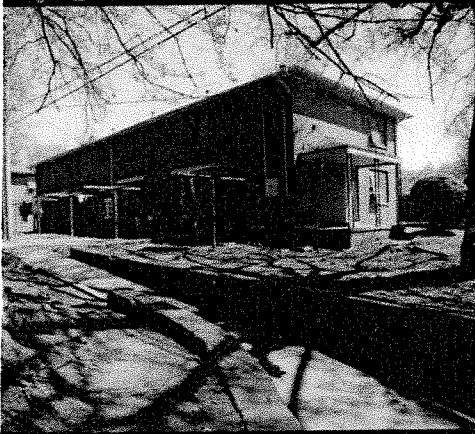
ILFORD DELTA 400 PKO



ILFORD DELTA 400 PKO



ILFORD DELTA 400 PKO



ILFORD DELTA 400 PKO



ILFORD DELTA 400 PKO



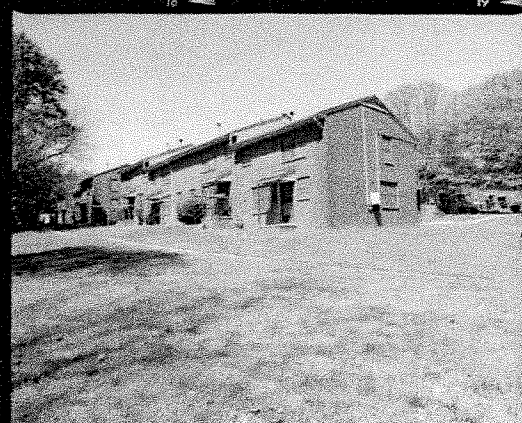
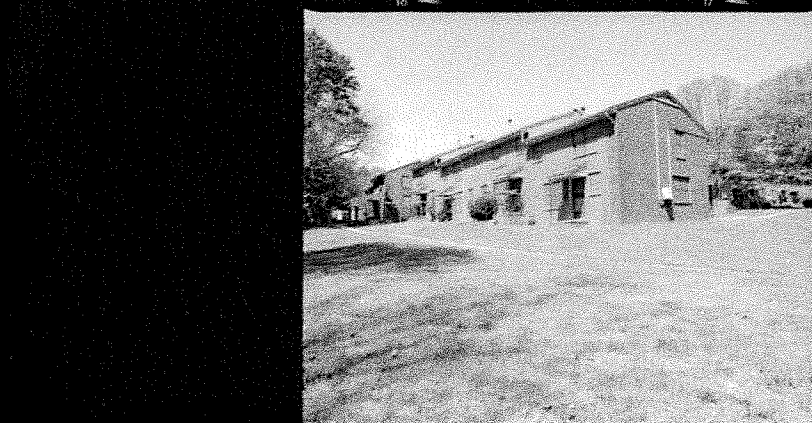
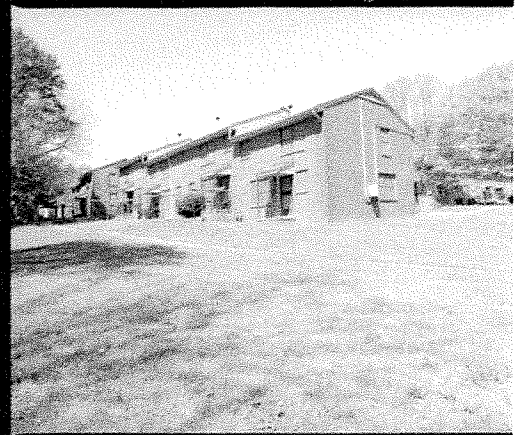
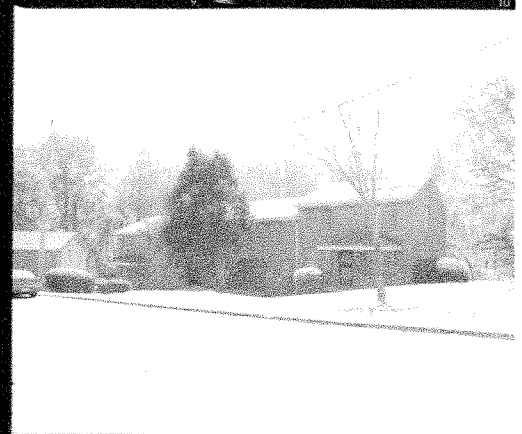
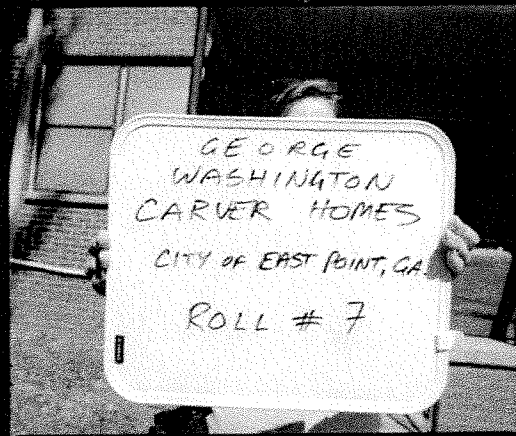
ILFORD DELTA 400 PKO



DATE:

ASSIGNMENT:

FILE NO:

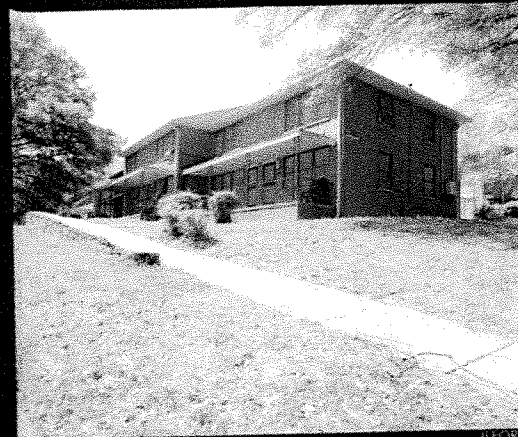


DATE:

ASSIGNMENT



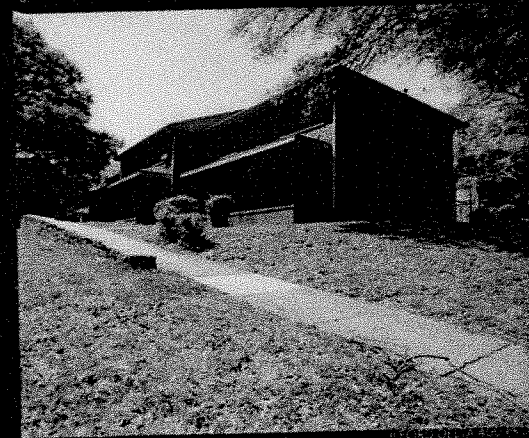
ILFORD DELTA 400 PRO



ILFORD DELTA 400 PRO



ILFORD DELTA 400 PRO



ILFORD DELTA 400 PRO



ILFORD DELTA 400 PRO



ILFORD DELTA 400 PRO



ILFORD DELTA 400 PRO



ILFORD DELTA 400 PRO



DATE:

ASSIGNMENT:

FILE NO.:



ILFORD DELTA 400 PRO

3571

ILFORD DELTA 400 PRO

3571

ILFORD DELTA 400 PRO



3571

ILFORD DELTA 400 PRO



3571

ILFORD DELTA 400 PRO



3571

ILFORD DELTA 400 PRO



ILFORD DELTA 400 PRO

3571



ILFORD DELTA 400 PRO

A

3571



ILFORD DELTA 400 PRO

3571



ILFORD DELTA 400 PRO

3571



ILFORD DELTA 400 PRO

3571

DATE:

ASSIGNMENT:

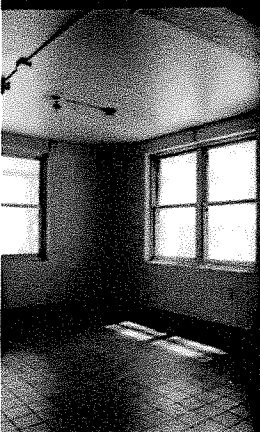
FILE NO:



ILFORD DELTA 400 PRO



ILFORD DELTA 400 PRO



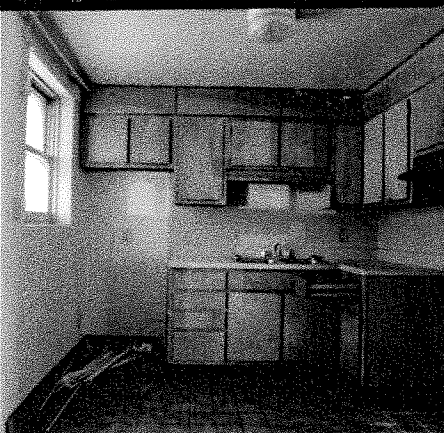
ILFORD DELTA 400 PRO



ILFORD DELTA 400 PRO



ILFORD DELTA 400 PRO



ILFORD DELTA 400 PRO



ILFORD DELTA 400 PRO



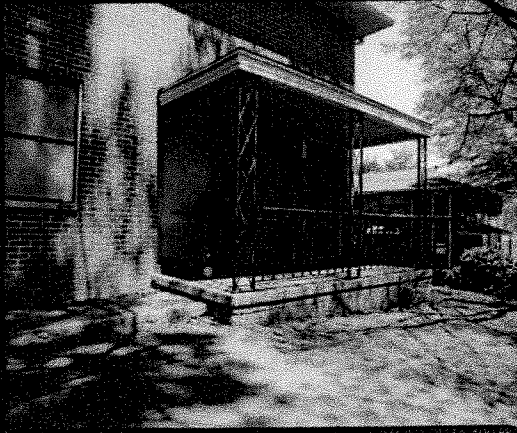
ILFORD DELTA 400 PRO



DATE:

ASSIGNMENT:

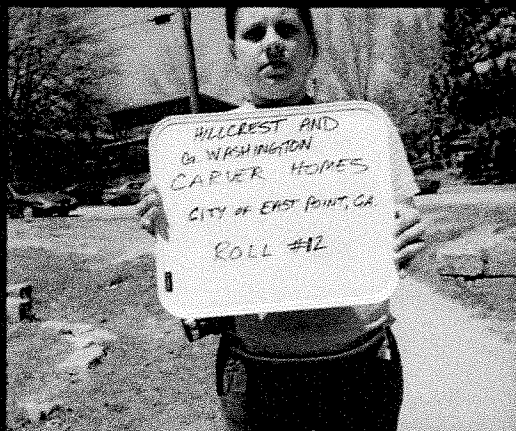
FILE NO.



DATE:

ASSIGNMENT:

FILE NO.:



ILFORD DELTA 400 PRO



ILFORD DELTA 400 PRO



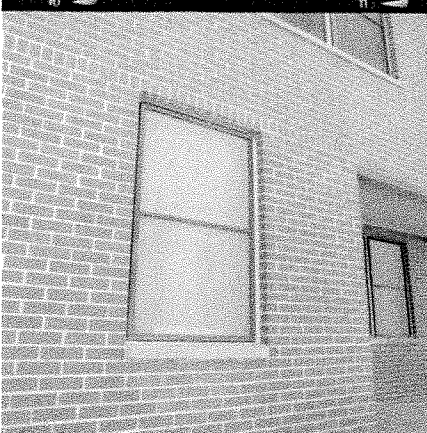
ILFORD DELTA 400 PRO



ILFORD DELTA 400 PRO



ILFORD DELTA 400 PRO



ILFORD DELTA 400 PRO



ILFORD DELTA 400 PRO



ILFORD DELTA 400 PRO

